

# Aspenwood Drive Area of Interest PFAS Community Meeting

February 19, 2026

**MPART**

MICHIGAN PFAS ACTION RESPONSE TEAM

# Aspenwood Drive Area of Interest PFAS Community Meeting

Karen Vorce, District Supervisor

Michigan Department of Environment, Great Lakes, and Energy  
Remediation and Redevelopment Division

(616) 439-8008

[VorceK@Michigan.gov](mailto:VorceK@Michigan.gov)

**MPART**

MICHIGAN PFAS ACTION RESPONSE TEAM

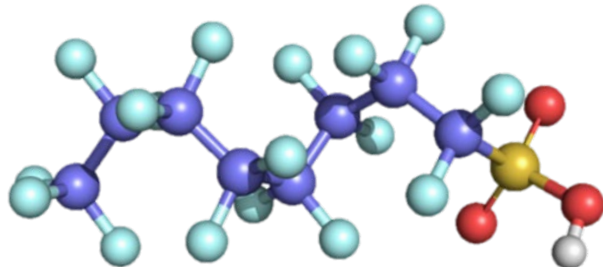
# Agenda

- Introductions
- Agenda:
  - PFAS Overview – Karen Vorce
  - Health – Kun-soo (Joshua) Lee, Michigan Department of Health and Human Services
  - Site Investigation – Leah Gies, EGLE Grand Rapids District Office Project Manager
- Q&A

# Per- and Polyfluoroalkyl Substances (PFAS)

## What are they?

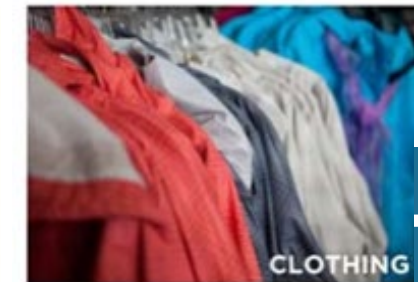
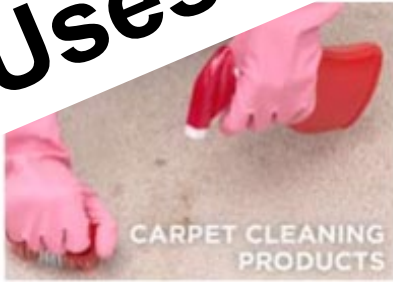
- Group of man-made chemicals used since the 1940s
- Often called the “forever chemical” because they don’t break down easily.



## Why the concern?

- Widespread throughout the environment
- Bioaccumulate – Build up in our bodies
- Some PFAS may affect health
- Potential impact to residential wells
- Found in many day-to-day consumer products

# PFAS Uses



# Michigan's Drinking Water and Groundwater Cleanup Standards

Compound	Standards
PFNA	6 ppt
PFOA	8 ppt
PFOS	16 ppt
PFHxS	51 ppt
GenX (HFPO-DA)	370 ppt
PFBS	420 ppt
PFHxA	400,000 ppt



# Michigan PFAS Action Response Team (MPART)



## What's new

- **12/2** - New area of interest in [Kent County: Aspenwood Drive Area of Interest](#)
- **12/1** - [MPART Fast Facts for fiscal year 2025](#)
- **12/1** - [Story Map for how MPART is addressing PFAS contamination](#)
- **11/21** - New site in [Macomb County: Detroit Arsenal Tank Plant Installation BRAC](#)
- **11/14** - New site in [Oakland County: Former Huron Valley Bogie Lake WWTP](#)
- **10/30** - New site in [Wayne County: National Airport](#)
- **9/29** - New site in [Allegan County: DLD Environmental Services, Inc](#)
- **9/19** - [AG Secures Settlements with Past and Present Operators of White Pigeon Paper Mill](#)
- **9/15** - MDHHS reminds hunters of 'Do Not Eat' health advisories



### MPART Fast Facts FY25

Funding from the Michigan Legislature allowed us to continue to be a national leader in addressing PFAS

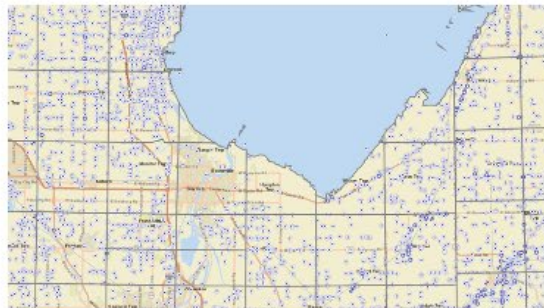


# MPART

MICHIGAN PFAS ACTION RESPONSE TEAM

- PFAS 101
- Resources For Residents (shown)
- Site investigation summaries
- Public meeting calendar

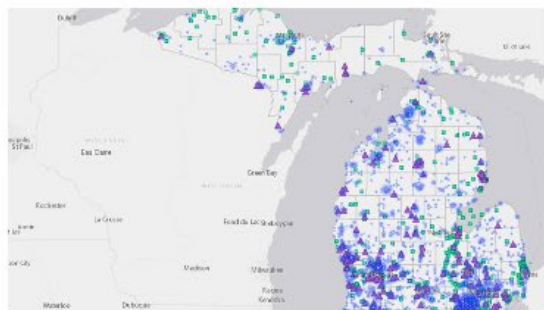
## Protect your drinking water



### Research your well

Having a private residential well means you are responsible for your own water system. This includes taking care of and knowing the history of your well. Wellogic is a portal that provides an easy and efficient method to look up your well information.

[How to use Wellogic >](#)



### Find PFAS sites in your area

A PFAS site is a location where PFAS has been



### Sample your private well

For private residential well owners, the first way to protect yourself from PFAS is to sample your well. Follow our detailed home sampling guidance to test your drinking water.

[Options for home sampling >](#)



### Perform well maintenance

Taking care of your water well is important;



### Home filters

If you have a private residential well, an in-home filtration system can help filter natural impurities (such as iron) and manmade contaminants (such as PFOS and PFOA).

[Choosing a filter >](#)



### Don't have a private well?

Approximately 75% of Michigan residents get

# MPART

MICHIGAN PFAS ACTION RESPONSE TEAM

# PFAS and Health

Kun-soo (Joshua) Lee, Toxicologist

(517) 243 – 9522

leek28@michigan.gov



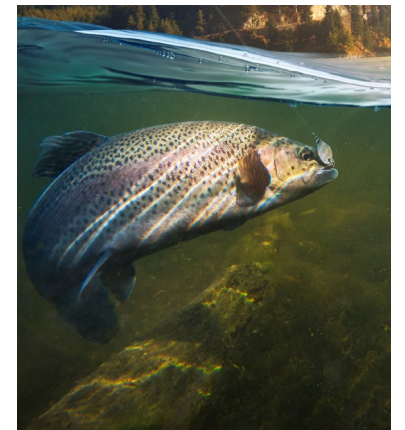
# The Role of MDHHS/ Local Health Department (LHD)

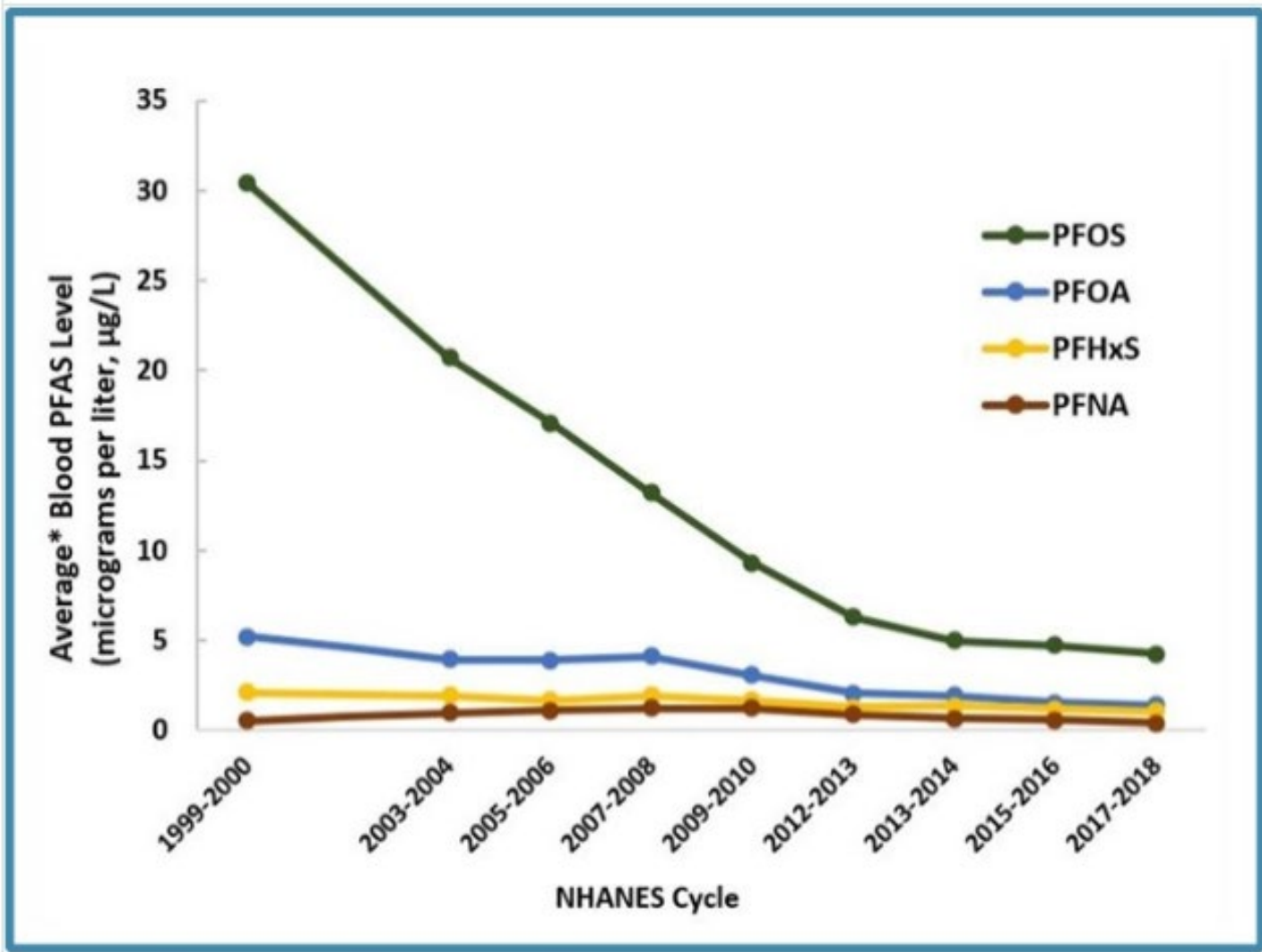
- Understand the health concerns facing your community
- Develop a plan to investigate and address health risks
  - EGLE leads the site investigation
  - MDHHS and the Local Health Department lead the public health planning and response
- Evaluate PFAS exposures to residents in the community
  - Recommend public health actions as needed



# Exposure to PFAS

- Drinking contaminated water
- Eating fish caught from water contaminated by PFAS
  - Eat Safe Fish Guidelines
- Incidental swallowing of contaminated soil or dust
- Eating food packaged in materials containing PFAS
- Using some consumer products
- PFAS absorption through skin is typically not a concern





Blood levels  
of the  
most common  
PFAS in  
people in the  
United States  
2000-2018



# Associated Human Health Outcomes PFOA and PFOS

- Reduced fertility
- High blood pressure or pre-eclampsia in pregnant women
- Small decreases in infant birth weight
- Higher cholesterol
  - Especially total cholesterol and LDL cholesterol



# Associated Human Health Outcomes PFOA and PFOS

- Thyroid disease
- Liver damage
- Decreased immune system response to vaccines
- Developing certain types of cancer
  - In particular, kidney and testicular cancers\*

\* PFOA only



# **Multiple Lines of Consideration for Determining Public Health Response Actions**

- MDHHS Comparison Values
- Residential Well Results (individually and collectively)
- Site-specific information (e.g., known source, geology, etc.)



# MDHHS Comparison Values

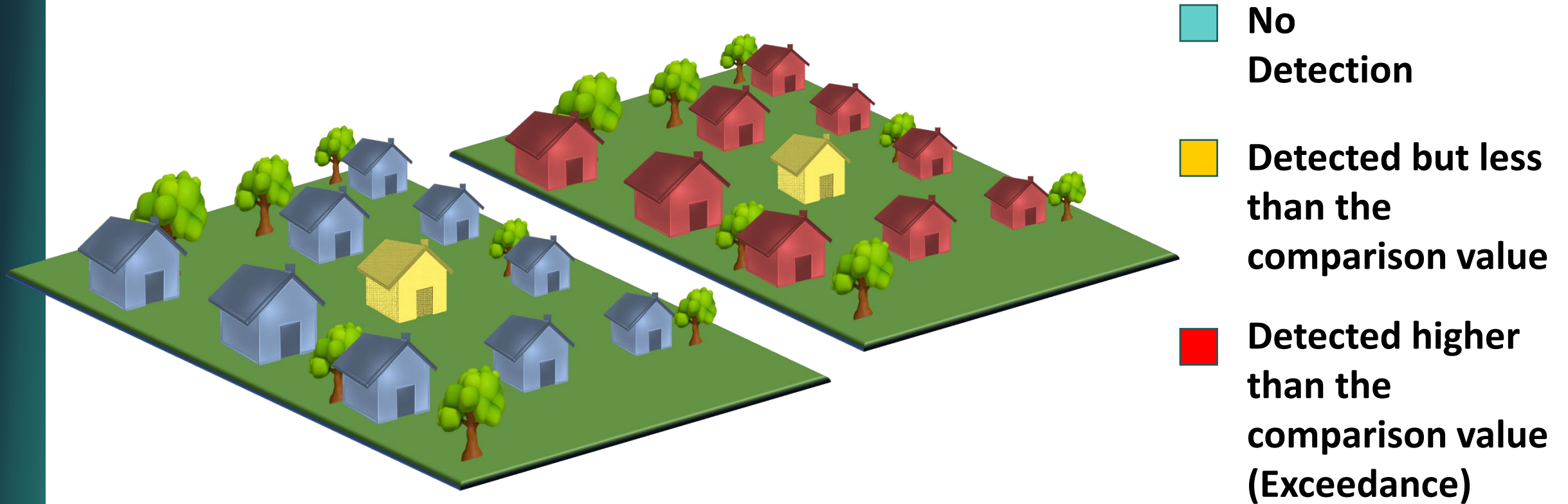
PFAS	Comparison Values
PFOS	8 ppt <sup>A</sup>
PFOA	8 ppt <sup>B</sup>
PFNA	6 ppt <sup>B</sup>
PFHxS	51 ppt <sup>B</sup>
PFBS	420 ppt <sup>B</sup>
PFHxA	400,000 ppt <sup>B</sup>
GenX	370 ppt <sup>B</sup>

A. MDHHS Public Health Drinking Water Screening Level

B. MPART Health-Based Value or Maximum Contaminant Level (MCL)



# Residential Well Results (individually and collectively)



# MDHHS/LHD

## Public Health Response Actions

- No public health actions necessary
- Recommend filter or use of alternate water
  - Need time to conduct investigation
  - Provides residents with protection from potential fluctuations in PFAS levels, if any, while investigation is ongoing
- Education
  - Provide information on PFAS



# What to Look for When Selecting a Filter



<http://bit.ly/PFASHomeFilter>

- Make sure the filter has a NSF/ANSI Standard 53 for PFOA and PFOS reduction.
- Follow all manufacturer's instructions to make sure it is reducing the PFAS as expected.



# Eating Fish from Michigan's Lakes & Rivers

[Michigan.gov/eatsafefish](http://Michigan.gov/eatsafefish)



## Thornapple River

(downstream of Middleville Dam in Barry County, includes the Ada Impoundment, the Cascade Impoundment and the LaBarge Impoundments)

Type of Fish	Chemicals of Concern	Size of Fish (length in inches)	MI Servings per Month*
Bluegill	PFOS	Any	2
Carp	Mercury, PCBs	Any	2
Largemouth Bass	Mercury, PFOS	Under 18"	2
	Mercury	Over 18"	1
Rock Bass	Mercury, PFOS	Any	4
Smallmouth Bass	Mercury, PFOS	Under 18"	2
	Mercury	Over 18"	1
Sunfish	PFOS	Any	2



# Site Investigation

Leah Gies, PFAS Site Lead

Michigan Department of Environment, Great Lakes, and Energy

616-215-4781

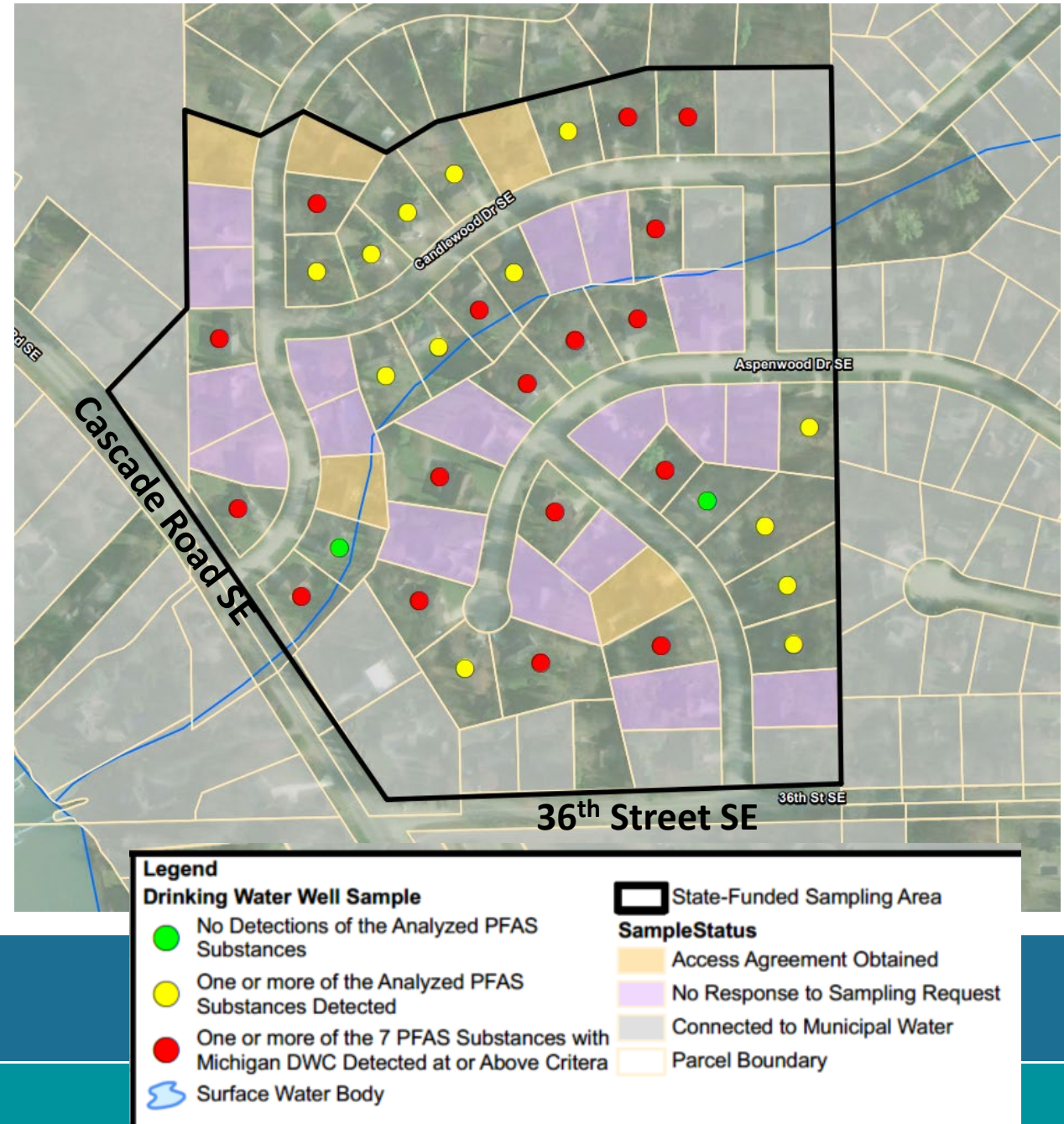
GiesL1@Michigan.gov

**MPART**

MICHIGAN PFAS ACTION RESPONSE TEAM

# Background

- An independent sampling result from a home on Aspenwood Drive identified PFAS (specifically PFOA) above criteria
- EGLE contacted the homeowner and 7 adjacent homes to confirm the result
- Based on those results, EGLE reached out to the southern portion of the neighborhood for sampling



# Background cont.

- Based on the results from the sampling, EGLE expanded the state-funded sampling north up to Woodvale Street
- During this time, a replacement well installed on Colchester was tested for PFAS as part of their permitting, and PFOA was detected above criteria
- Based on the Colchester result, the state-funded sampling area was expanded to the north again to include 95 more homes



# Results

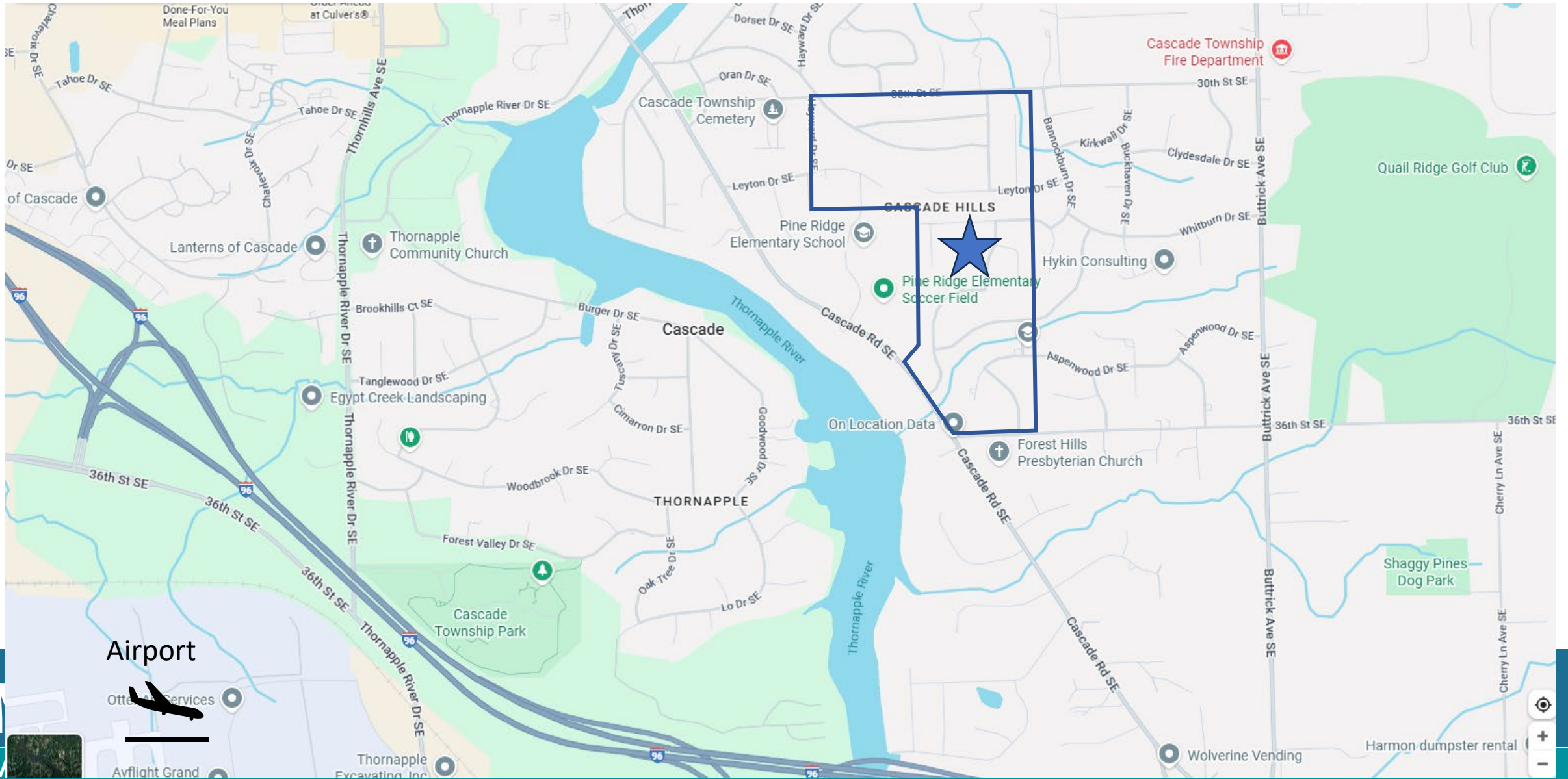
- To date, EGLE has sampled 127 wells:
  - 55 had detections of PFAS above criteria (red dots)
  - 62 had detections of PFAS below criteria (yellow dots)
  - 10 were non-detect (green dots)
- Maximum concentrations detected:
  - 26 parts per trillion (ppt) PFOA (compared to 8 ppt)
  - 17 ppt PFOS (compared to 16 ppt)



**MPART**

MICHIGAN PFAS ACTION RESPONSE TEAM

# Potential Sources?



Airport



# Next Steps

- State-funded residential well sampling will continue
  - When looking at expanding the sampling area, EGLE considers concentrations in wells closest to that area, well depths, groundwater flow direction, and site geology
- All homes in the sampling area that have detections are being offered filters by state and local health departments
- EGLE is looking into long-term solutions for homes where PFAS has been detected (e.g. municipal water)

# Municipal Water

- Light gray shaded properties are where municipal water is available
- Extending the water mains into the neighborhood is something we're looking into but requires significant funding



# Summary

- PFAS has been detected in drinking water wells in the neighborhood
- EGLE is offering free testing to homes located within the sampling area depicted
- All homes in the sampling area that have detections are being offered free point-of-use filters
- Municipal water connection may be available in the future but will take time and funding



**MPART**

MICHIGAN PFAS ACTION RESPONSE TEAM

# Questions

**MPART**

MICHIGAN PFAS ACTION RESPONSE TEAM