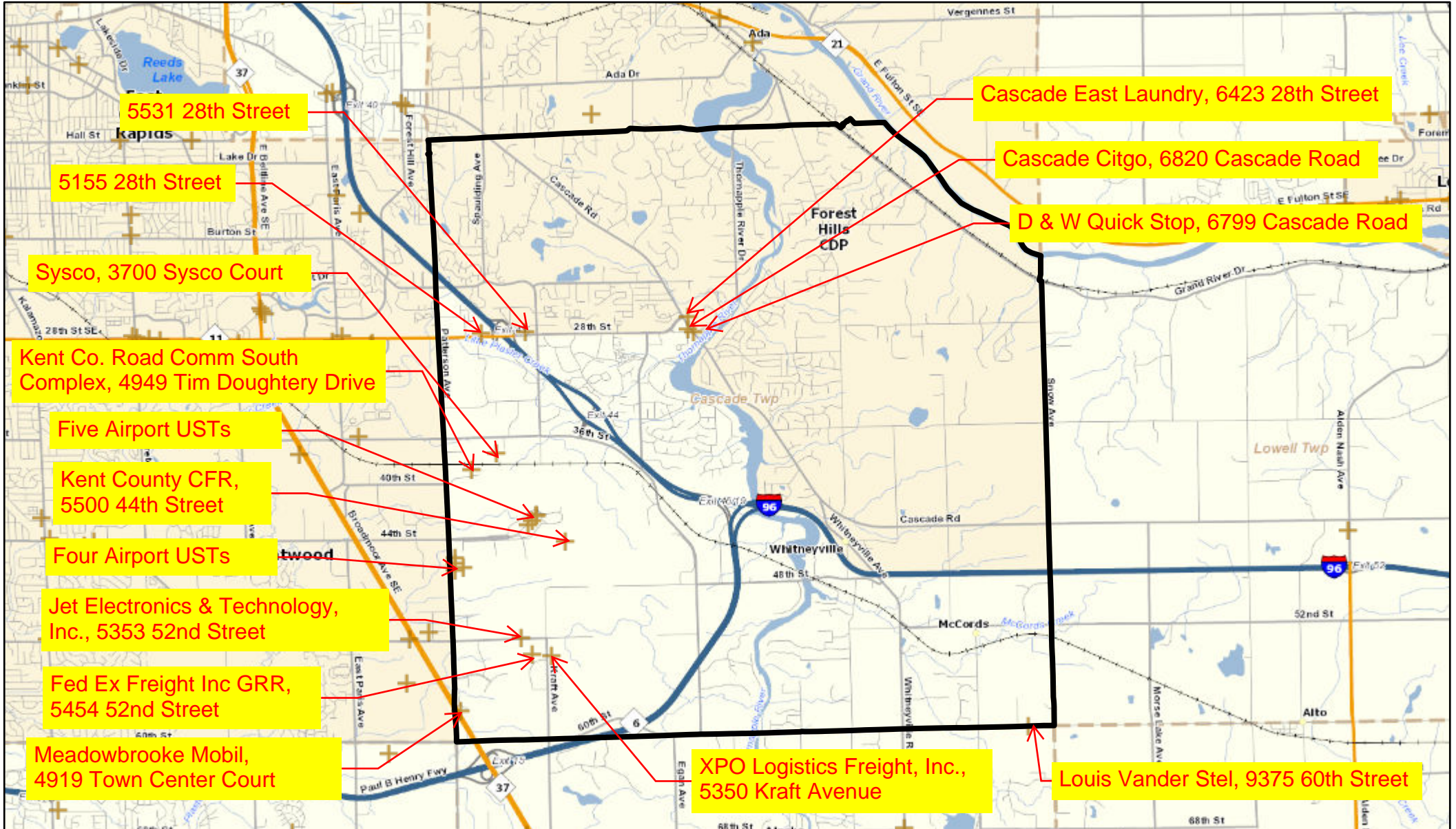
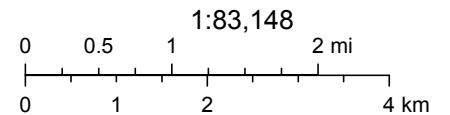


# Environmental Mapper



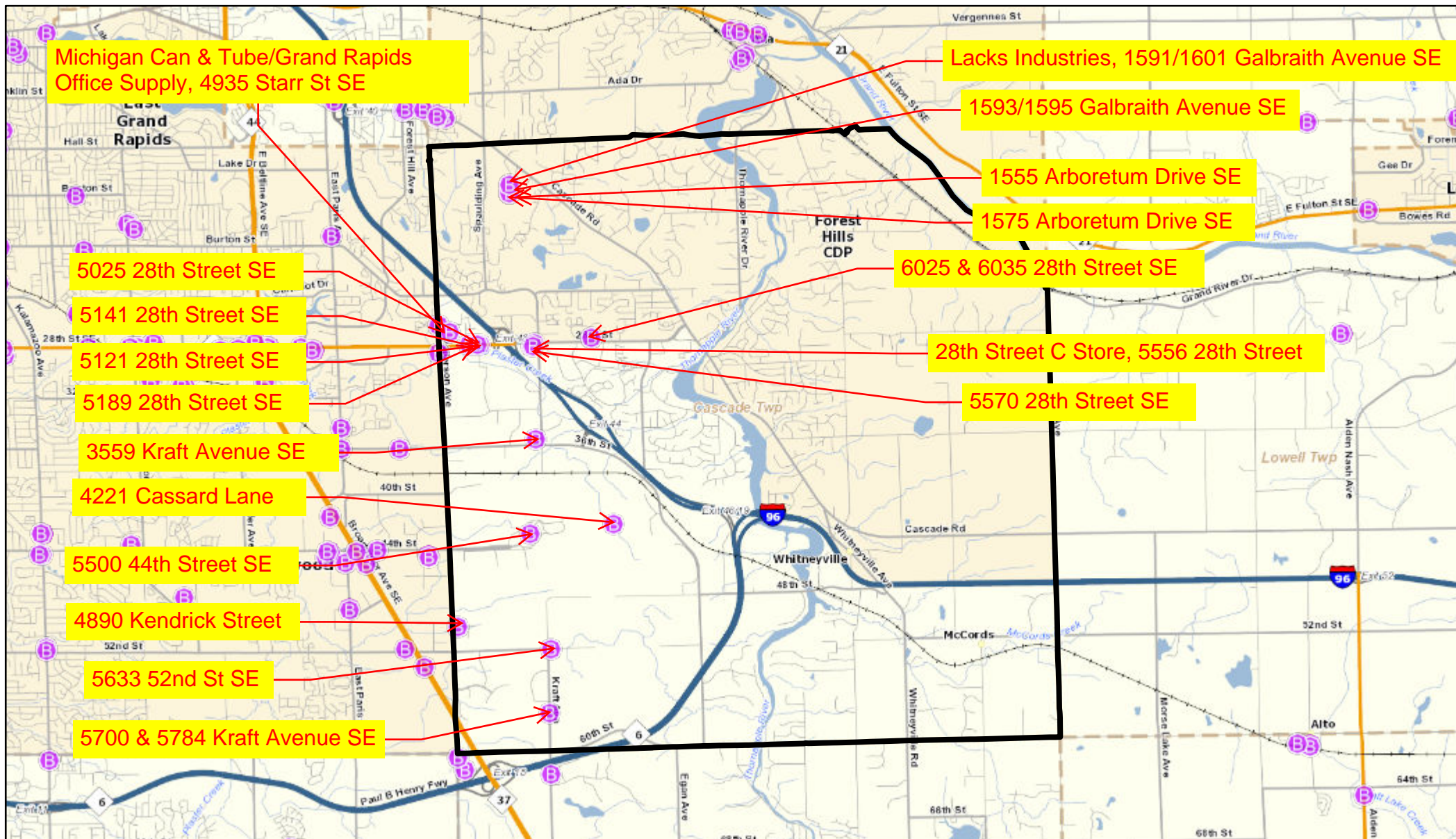
April 30, 2020

+ Active Tanks



Sources: Esri, HERE, Garmin, USGS, Intermap, INCREMENT P, NRCan, Esri Japan, METI, Esri China (Hong Kong), Esri Korea, Esri (Thailand), NGCC, (c) OpenStreetMap contributors, and the GIS User Community

# Environmental Mapper



Michigan Can & Tube/Grand Rapids Office Supply, 4935 Starr St SE

Lacks Industries, 1591/1601 Galbraith Avenue SE

1593/1595 Galbraith Avenue SE

1555 Arboretum Drive SE

1575 Arboretum Drive SE

6025 & 6035 28th Street SE

28th Street C Store, 5556 28th Street

5570 28th Street SE

5025 28th Street SE

5141 28th Street SE

5121 28th Street SE

5189 28th Street SE

3559 Kraft Avenue SE

4221 Cassard Lane

5500 44th Street SE

4890 Kendrick Street

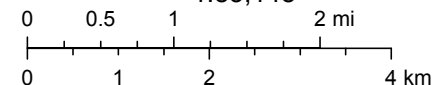
5633 52nd St SE

5700 & 5784 Kraft Avenue SE

April 30, 2020

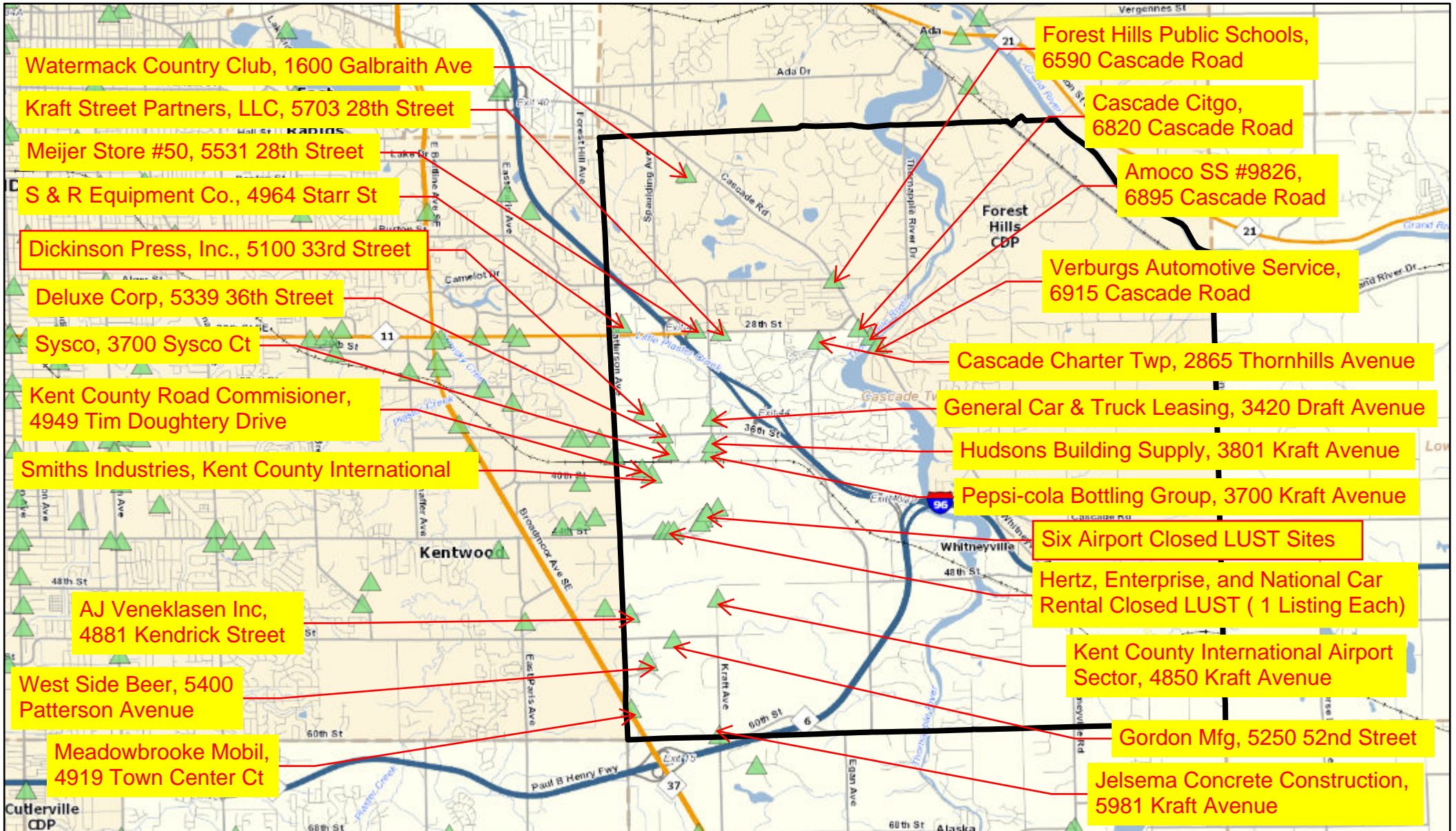
**B** Baseline Environmental Assessment

1:83,148



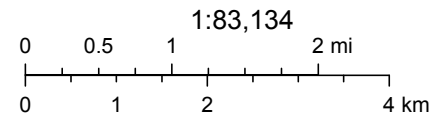
Sources: Esri, HERE, Garmin, USGS, Intermap, INCREMENT P, NRCan, Esri Japan, METI, Esri China (Hong Kong), Esri Korea, Esri (Thailand), NGCC, (c) OpenStreetMap contributors, and the GIS User Community

# Environmental Mapper



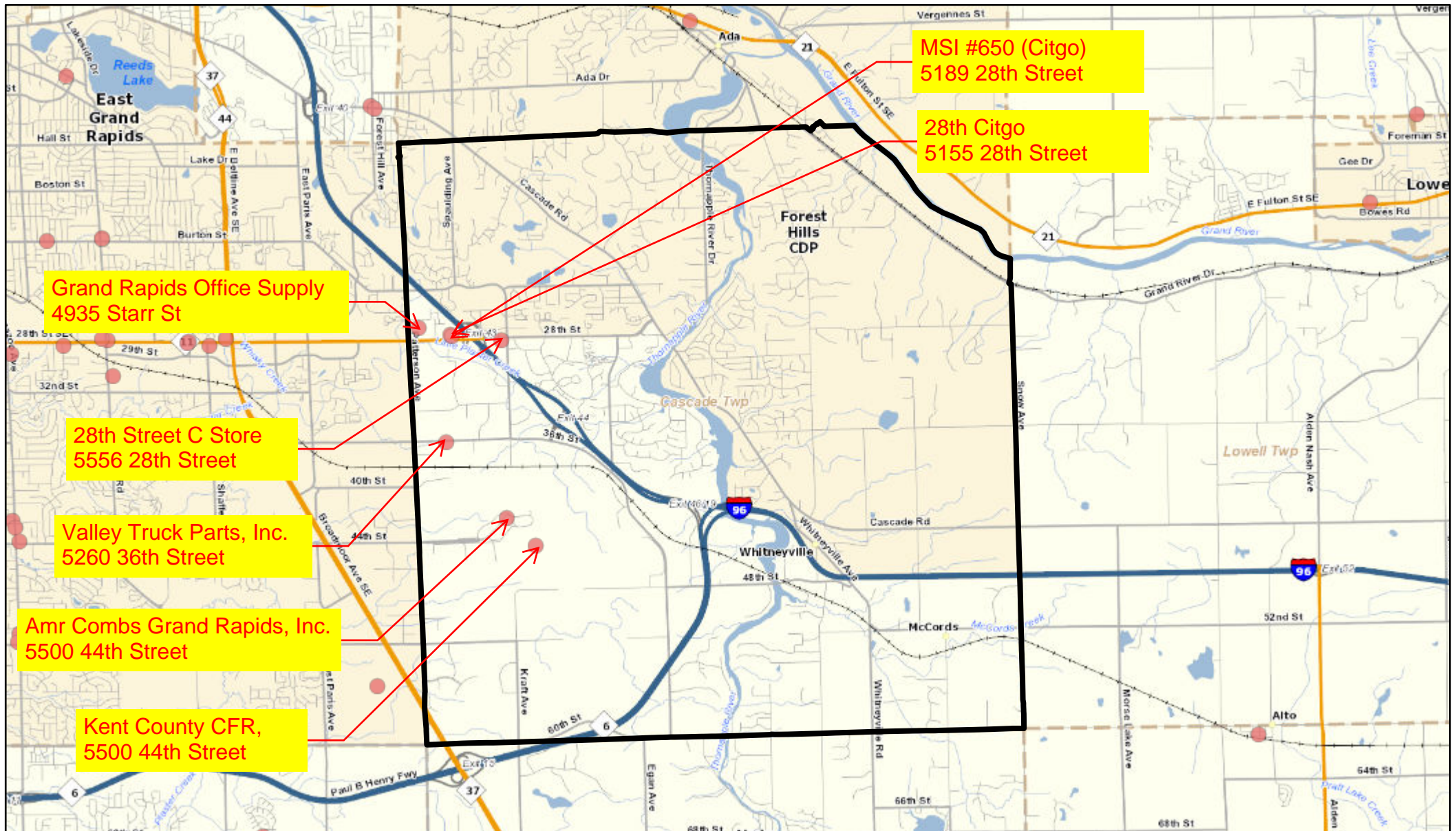
April 30, 2020

▲ Closed LUST Sites



Sources: Esri, HERE, Garmin, USGS, Intermap, INCREMENT P, NRCan, Esri Japan, METI, Esri China (Hong Kong), Esri Korea, Esri (Thailand), NGCC, (c) OpenStreetMap contributors, and the GIS User Community

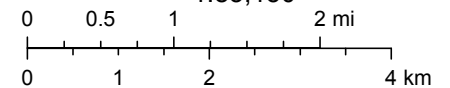
# Environmental Mapper



April 30, 2020

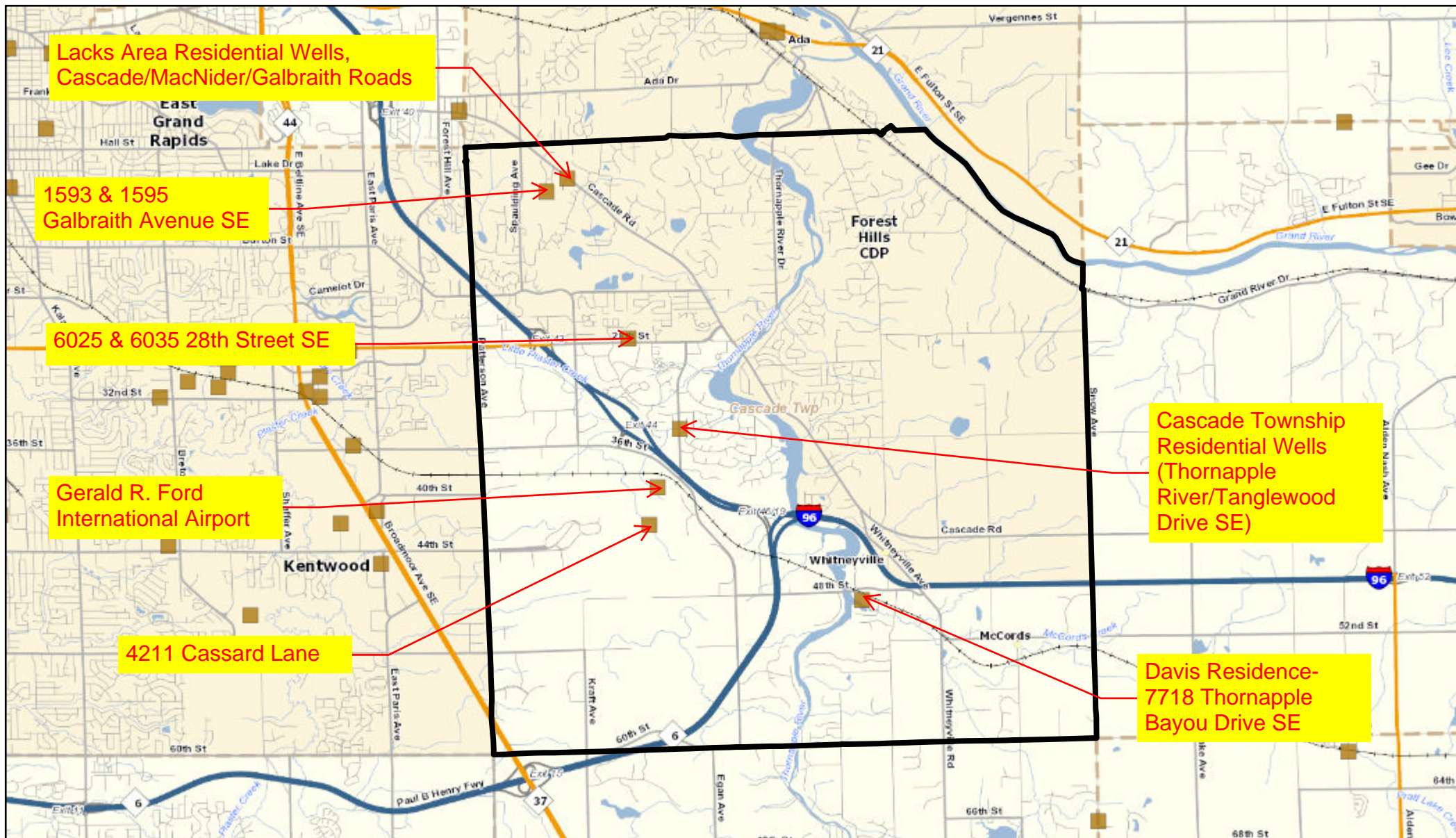
● Open LUST Sites

1:83,150



Sources: Esri, HERE, Garmin, USGS, Intermap, INCREMENT P, NRCan, Esri Japan, METI, Esri China (Hong Kong), Esri Korea, Esri (Thailand), NGCC, (c) OpenStreetMap contributors, and the GIS User Community

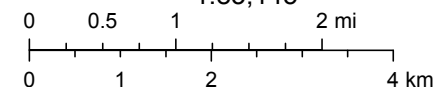
# Environmental Mapper



April 30, 2020

■ Sites of Environmental Contamination (Part 201)

1:83,145



Sources: Esri, HERE, Garmin, USGS, Intermap, INCREMENT P, NRCan, Esri Japan, METI, Esri China (Hong Kong), Esri Korea, Esri (Thailand), NGCC, (c) OpenStreetMap contributors, and the GIS User Community