

**AGENDA**  
Cascade Charter Township  
Downtown Development Authority Board of Directors  
February 19, 2019  
5:30 p.m.  
Cascade Library Wisner Center  
2870 Jacksmith Ave. SE

- ARTICLE 1.** Call the Meeting to Order  
Record the Attendance
- ARTICLE 2.** Approval of the Agenda
- ARTICLE 3.** Approval of the Minutes of January 15, 2019 Meeting
- ARTICLE 4.** Acknowledge visitors and those wishing to speak to non-agenda items *(Comments are limited to five minutes per speaker)*
- ARTICLE 5.** Discuss and Consider DDA Sponsorship for the Cascade Metro Cruise Warmup
- ARTICLE 6.** Discuss Future DDA Projects
- ARTICLE 7.** Discuss and Consider Holiday Decorations for the Cascade District
- ARTICLE 8.** Discuss Synthetic Ice Rink
- ARTICLE 9.** Any Other Business  
a. Update on Planning Activities
- ARTICLE 10.** Adjournment

MINUTES  
Cascade Charter Township  
Downtown Development Authority Board of Directors  
Tuesday, January 15, 2019  
5:30 P.M.  
Cascade Library – Wisner Center

**ARTICLE 1.** Chairman Puplava called the meeting to order at 5:30 P.M.  
Members Present: Beahan, DeWitt, Kingsland, McNeil-Chapman, Puplava, Growney, Stephan  
Members Absent: Siegle, Makkar  
Others Present: DDA Director Sandra Korhorn, and those listed on the sign in sheet.

**ARTICLE 2. Approve the current Agenda.**

**Motion was made by Member Beahan to approve the Agenda. Supported by Member Kingsland. Motion carried 6 to 0.**

**ARTICLE 3. Approve the Minutes of the November 13, 2018 Meeting.**

**Motion was made by Member Beahan to approve the Minutes as presented. Supported by Member DeWitt. Motion carried 6 to 0.**

**ARTICLE 4. Acknowledge visitors and those wishing to speak to non-agenda items.**

None

**ARTICLE 5. Review the 2019 Budget**

Director Korhorn started with a review of the bigger items that are included in the 2019 budget.

There is \$128,000 for the Rapid bus service. Repairs and maintenance are budgeted at \$78,000. Special projects such as a bucket truck, holiday decor, and marketing material are budgeted at \$50,000. There is \$7,000 in the budget for the 2019 Metro Cruise warm up.

Member Stephan arrived at this time.

**ARTICLE 6. Discuss 2019 and Future DDA Projects**

Director Korhorn stated the main project that will be focused on for 2019 is the sidewalk loop in Centennial Park on Orchard Vista, and that it will include street lights, sidewalks, and medians at each of the park entrances as well as four internal medians. This is expected to be a fall 2019 project.

A rollover project from 2018 is the sealing of the stamped concrete crosswalks in the village. It could not be completed last fall due to uncooperative weather conditions.

Other future projects may include:

A community gathering place/pavilion on the lawn at the library.

The sidewalk extension on Cascade road that is included in the pathway millage, but there is no timeframe at this point. Cost for that project may be between \$300,000-\$400,000.

A potential path from the Wisner Center to Tassel Park that runs behind the businesses on Old 28<sup>th</sup> St. has also been a topic of conversation during Master Plan Meetings.

The purchase of riverfront properties for redevelopment in that area.

A 28<sup>th</sup> St. midblock crossing near the Crowne Plaza.

Gateway signage and village gateway improvements.

Director Korhorn stated that the art gallery has tentatively been sold, and the potential buyer has been discussing future redevelopment and possible office space.

Director Korhorn then stated that the Starbucks going into the Thornapple Center (exact timeline still unknown) has led to business owners meeting and discussing the need for a refresh in that area. The RX Optical will become a standalone building.

#### **ARTICLE 7. Discuss Holiday Decorations for the Cascade District**

Director Korhorn started by stating that the holiday decorations have been being restocked over the past couple of years. There are currently 79 snowflakes, 72 string lights, and 2 Christmas trees.

For the 2018 holiday season, one Christmas tree was at the museum gardens, and the other at the bottom of Old 28<sup>th</sup> St. and Cascade Road. The white string lights were on every other pole on Cascade Road, and on every pole on Jacksmith Drive. The snowflakes were on Cascade Road, Old 28<sup>th</sup> St. and 28<sup>th</sup> St. from Cascade Road to Thornhills. The multi colored lights were on every other pole along 28<sup>th</sup> St. from Cascade Road to Kraft. The wreaths were hung at the double street light intersections, at the township office, and Tassell Park.

Discussion was held about decorating for the 2019 season, and Director Korhorn stated that she will put together a plan/budget for a tree for Tassell park, wreath for the restroom area and for the museum windows, additional snowflakes, and doing electrical work where needed. This will be discussed at the February meeting.

**ARTICLE 8. Discuss Cascade District Events/Marketing Tools**

Events to take place in 2019 include the following:

Sunday afternoon live concerts at the Wisner. They have been very well liked by the community. Family nights at the library with three concerts to be added to the schedule. The Cascade Metro Cruise warmup in August. This will be the 10 year anniversary; details will be put together soon. The tree lighting ceremony is scheduled for Sunday, Decmeber 1<sup>st</sup>. Anne at My Sweet Peony will be resurrecting The Sweetheart Hop this year on February 16th.

Potential 2019 events include the Taste of Cascade with local restaurants. We are also considering some July 3rd ideas with food trucks, concerts or beer tents. Our residents are in favor of this type of event. Whitewater and Bayberry Chase apartments are very interested in doing community events, possibly a movie night at one of their facilities.

The Business Spotlight is going well and being very well received. The 2<sup>nd</sup> edition of the Business Guide is also out and also being very well received. Director Korhorn stated that will get updated a couple of times per year as new businesses sign up. Our Made in Cascade website is up and running for events and news. The fabric grocery bags with our logo are still being discussed, as well as some type of app for the Cascade district.

**ARTICLE 9. Election of Officers**

**Motion was made by Member Behan to elect the following Officers; supported by Member DeWitt. Motion carried 7-0.**

Chair – Jennifer Pupilava

Vice Chair – Steve Stephan

Secretary – Diana Kingsland

**ARTICLE 10. Any Other Business**

- a. Director Korhorn stated that she will circulate the contact list for Board Members via email to all Members.
- b. Director Korhorn reviewed the Community Outreach Summary put together with Master Plan information.
- c. Director Korhorn stated that there are not a lot of new projects taking place in district at this time.
- d. Director Korhorn introduced Rene Growney as the newest Member of the DDA. She is the owner of Portobello Road.
- e. Director Korhorn reviewed the 2019 DDA meeting schedule. There will be two joint meetings; one in May, and one in October.

**Article 11. Adjournment**

**Motion was made by Member Behan to adjourn. Supported by Member DeWitt. Motion carried 7 to 0. The meeting was adjourned at 6:35 p.m.**

Respectfully submitted,  
Diana Kingsland, Secretary

---

---

## DDA MEMORANDUM

---

---

**To:** Cascade Township DDA Board

**From:** Sandra Korhorn, DDA/Economic Development Director *SKK*

**Subject:** Discuss and Consider DDA Sponsorship for the Cascade Metro Cruise Warmup Event

**Meeting Date:** February 19, 2019

---

The Cascade Metro Cruise Warmup Event will be held this year at the Thornapple Centre on August 22. This year is the 10<sup>th</sup> anniversary of the event.

This event continues to be popular and bring people into the community and the business district. It increases awareness of Cascade Township and our businesses. The DDA plan does allow the board to “create, manage and support annual events occurring within the DDA district”.

The Metro Cruise Warmup committee is requesting \$5,000 for sponsorship of the event. Staff is recommending the DDA sponsor the Metro Cruise Warmup event again for 2019. The committee has been meeting and is working on the schedule of events/activities as well as talking with business owners in the DDA to generate more involvement.

---

---

## DDA MEMORANDUM

---

---

**To:** Cascade Township DDA Board

**From:** Sandra Korhorn, DDA/Economic Development Director *SKK*

**Subject:** Discuss Future DDA Projects

**Meeting Date:** February 19, 2019

---

At the January meeting, the board discussed future projects that the DDA may be interested in pursuing. Staff was instructed to gather additional information and bring the priority items back to the board for further discussion.

The three potential projects are as follows:

1. Community Gathering Space – This item came up often during the master plan meetings. I have included the final presentation from the 2017 public meeting in the packet for your review.
2. Path from Tassell Park to Library – This came up often during the master plan meetings. I have included a rough sketch of a potential path for your review.
3. 28<sup>th</sup> St. Mid-Block Crossing – This project, if interested, will need further discussion with the Kent County Road Commission.

The sidewalk extension on Cascade Rd. from 28<sup>th</sup> St. to Cascade Hospital for Animals was part of the pathway millage vote, which passed in November. The DDA will be responsible for the sidewalk work in the District. This project will likely be a 2019 project and the cost will be rolled in with the bond for the Centennial Park work.

Staff will also continue to pursue (and leave on the project list) the purchase of riverfront properties should an opportunity arise.

Mike Berrevoets, Township engineer, will be at the meeting to discuss the future projects and timing for construction plans so the DDA board is aware of the schedule.



Transform.  
Activate. Gather.

CASCADE GATHERING PLACE



# Cascade Downtown Development Authority

What is the Cascade Downtown Development Authority (DDA)?

Authorized by the State of Michigan (PA 197 of 1975)

Purpose:

- Halt property value deterioration and increase property tax valuation where possible
- Eliminate the causes of deterioration
- To promote economic growth.

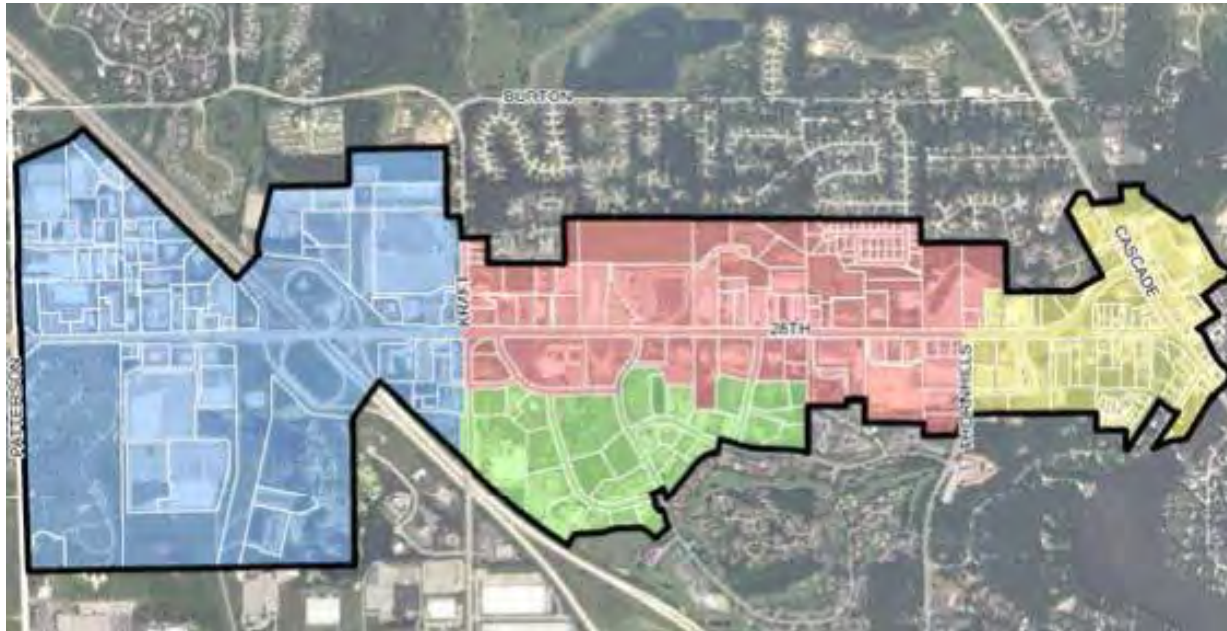
Cascade Township DDA

- Established in 1993
- Expanded in 2003 (Interchange Area)
- Expanded in 2004 (Centennial Business Park)

DDA is governed by a Board of Directors (9 members) appointed by the Township Board

- Mixture of Township representatives, Business owners, DDA residents and at-large residents

# Cascade Downtown Development Authority



# Cascade Downtown Development Authority

How is a Downtown Development Authority Funded?

- Donations
- Millage (up to 2 mills) Cascade does not levy millage
- Bond Proceeds
- Revenue From Properties
- Other Sources (Grants, Special Assessment, GF Contributions, etc...)
- Tax Increment Financing

# Cascade Downtown Development Authority

## What is “Tax Increment Financing?”

- The DDA can capture the taxes generated by subsequent growth in the district.
- Taxing jurisdictions always receive the tax revenues from the base taxable value.
- DDA receives tax revenues generated from any taxable value growth from the base year, for the duration of the Tax Increment Financing Plan.
- Local school millages and State Education Tax is not subject to capture – they continue to receive tax revenues on growth.

# Cascade Downtown Development Authority

## How Does Tax Increment Financing Work?

### Base Year

Joe's Trinkets and Widgets

Taxable Value = \$100,000

Millage = 10 mills

Base TV = \$100,000

Increment TV = \$0

Taxes = \$1000

Township = \$100

County = \$500

Library = \$100

College = \$300

DDA = \$0

### Year One

Joe's Trinkets and Widgets

Taxable Value = \$103,000

Millage = 10 mills

Base TV = \$100,000

Increment TV = \$3,000

Taxes = \$1030

Township = \$100

County = \$500

Library = \$100

College = \$300

DDA = \$30

# Cascade Downtown Development Authority

What can Tax Increment Financing revenues in the DDA be spent on?

- DDA Act has a comprehensive list of the things a DDA can partake in.

TIF funds in general —

- Must be spent on infrastructure/projects/programs within or directly benefitting the DDA development area
- Must be spent on infrastructure/projects or program that are identified in the DDA Development Plan and Tax Increment Financing Plan

Cascade Plan was adopted by the Cascade DDA and Cascade Township Board in November 2011

Available online at [www.cascadetwp.org/Business/DDA/TIFPlan.aspx](http://www.cascadetwp.org/Business/DDA/TIFPlan.aspx)

# Cascade Downtown Development Authority

## What has the DDA invested in?

- Sidewalks
- Streetlighting
- Old 28<sup>th</sup> Street Streetscape
- Museum Garden Park
- Cascade/28<sup>th</sup> Interchange
- Cascade/TRD Interchange
- Mid-Block Crossing
- Project Maintenance
- Utility Costs
- Special Events
- Transportation
- Trees/Landscaping
- Studies/Plans
- Administration

# Cascade Downtown Development Authority

This project appears in the Village Area section of the  
Development Plan

“Create community gathering places along 28<sup>th</sup> Street and near the library, such as a community center, skate park, rock climbing, sound park, amphitheater, nature area, trails, baseball fields, and/or other public facilities.”

# Project Overview



# Community Input

---



- 1. 2009 Comprehensive Plan**
- 2. 2011 Downtown Development Plan**
- 3. 2014 Parks & Recreation Plan**
- 4. Stakeholder Meetings (KCRC, Library Staff, Friends of Library, 4th of July Committee, Community Foundation)**
- 5. Public Survey**
- 6.2 Public Input Sessions**

# Consistent Input

---

- Skate and climbing plaza with shelter
- Walking paths with seating and overlook areas
- Amphitheater flexible for intimate events
- Recirculating Water Feature
- Restroom/storage to minimize use of library facilities
- Native planting enhancements
- Improve on-street parking, visual appeal, and pedestrian connectivity along Jacksmith Ave.
- Protect and preserve existing tree grove
- Consider future Library expansion
- Flexible open areas for library outdoor programming
- Village gateway beautification and stormwater improvements at “triangle lot” (old 28th Street)

## LEGEND

### EXISTING

- A** CASCADE LIBRARY
- B** PARKING LOT
- C** NOTO'S RESTAURANT
- D** TREE GROVE
- E** STORMWATER DETENTION BASIN
- F** MEMORIAL TREES

### PROPOSED

- A** RECIRCULATING CASCADE FOUNTAIN STARTING AT TREE GROVE AND TERMINATING AT BANDSHELL OVERLOOK
- B** CHILDRENS SOUND AND DISCOVERY GARDEN (+/- 8,000 SF)
- C** AMPHITHEATER AREA (+/- 9,000 SF)
- D** ACCESSIBLE LOOP WALKS AND TRAILS (2,200 LF)
- E** FLEXIBLE OPEN GREEN SPACE
- F** ENTRY IMPROVEMENTS: DEFINED ON-STREET PARKING LANDSCAPED BUMP-OUTS, CROSSWALKS, ADDITIONAL STREET LIGHTING AND STREET TREES
- G** SKATE AND CLIMBING PLAZA (+/- 15,000 SF)
- H** PICNIC SHELTER (20'X40')
- I** OVERLOOK/VIEWING AREA
- J** BIKE PARKING WITH AIR AND TOOL STATION
- K** VILLAGE GATEWAY IMPROVEMENTS WITH NEW SIGN AND RAIN GARDEN
- L** RAIN GARDEN AND BIOSWALE
- M** NATIVE PLANTING AREA
- N** FUTURE LIBRARY EXPANSION
- O** RESTROOM, STORAGE, AND EVENT KIOSK (20'X20')







VILLAGE GATEWAY - EXISTING



VILLAGE GATEWAY - PROPOSED



JACKSMITH STREETSCAPE - EXISTING



JACKSMITH STREETScape - PROPOSED



**LEGEND**

- VILLAGE GATEWAY IMPROVEMENTS  
\$175,000
- TRAIL LOOP, NATURAL LANDSCAPING  
AND CHILDREN'S DISCOVERY GARDEN  
\$400,000
- AMPHITHEATER AREA  
\$1,400,000
- STREETScape IMPROVEMENTS  
\$250,000
- SKATE AND CLIMBING PLAZA  
\$470,000
- MULTI-PHASE TOTAL COST**  
\$2,695,000
- ENTIRE PROJECT (ONE PHASE) COST  
\$2,200,000



# Financing of the Project



This has been planned to be a DDA project from the beginning. The DDA captures a portion of the tax dollars generated by growth in the district to fund public improvements within the DDA district.

This project would have NO tax implications to residents if solely funded by the DDA, by public/private partnerships or private donors.

1. DDA
  - a. Cash - The DDA would phase the project.
  - b. Bond - The project could be done in its entirety at one time.
  
2. Private/Public Partnership
  - a. Cascade Community Foundation
  - b. Friends of the Library
  
3. Private Donors

# In Summary...



- 1. This project fits the Master Plan and DDA Plan and their priorities**
- 2. Serves as an economic driver for businesses and spotlights the village**
- 3. Serves the entire Cascade community**
- 4. Draws people from outside Cascade**
- 5. Expands the Library and its programs**
- 6. DDA Financed**

**From:** [Berrevoets, Michael](#)  
**To:** [Sandra](#)  
**Subject:** Library - Park path  
**Date:** Monday, May 7, 2012 10:01:52 AM  
**Attachments:** [20120507083034.pdf](#)

---

Sandra,

Attached is a PDF of the aerial photo with an approximate pathway location.

A few things:

1. Wood chip pathway would certainly be the easiest and cheapest in this location. An asphalt pathway would be more accessible for a variety of users but that would also require a lot more grading to be done.
2. Using parking lots isn't really desirable but I don't see how to avoid it without major work and easement issues with potentially uncooperative neighbors.
3. The approximate location of the pathway is to go perpendicular to the contours whenever possible. It's easier to walk downhill/uphill than it is to walk on a side slope.
4. Routing the pathway as shown cuts through the middle of some properties. Getting an easement may be impossible. Maybe some kind of use/lease agreement would be possible?
5. Staying close to the property lines and getting actual easements will make for difficult and costly construction. Not impossible, but certainly a lot of work and money for only the occasional use it may see.

If you need anything else, please let me know.

**Mike**



---



---

## DDA MEMORANDUM

---



---

**To:** Cascade Township DDA Board

**From:** Sandra Korhorn, DDA/Economic Development Director *SKK*

**Subject:** Discuss and Consider Holiday Decorations for The District

**Meeting Date:** February 19, 2019

At the January meeting, we discussed many options to expand our holiday decorating in The District. The Board directed staff to come up with a couple options to present at this meeting. Below are 2 options.

<b>Option 1</b>				
<u>Snowflakes</u>	<u>Quantity</u>	<u>Price</u>		<u>Total</u>
Diamond	5	289.00		1445.00
Silhouette	5	311.00		1555.00
Winterfest	5	334.00		1670.00
Spiral	5	355.00		1775.00
	<b>20</b>		Total	<b>6,445.00</b>
Wreaths for Museum	6	200.00		1200.00
14' Paramount Tree (multi)	1	6249.00		6249.00
Wreath for Tassell Park (restroom)	1	299.00		299.00
		<b>Total</b>		<b>14,193.00</b>

<b>Option 2</b>				
<b><u>Snowflakes</u></b>	<b><u>Quantity</u></b>	<b><u>Price</u></b>		<b><u>Total</u></b>
Diamond	8	289.00		2312.00
Silhouette	8	311.00		2488.00
Winterfest	5	334.00		1670.00
Spiral	5	355.00		1775.00
	<b>26</b>		Total	<b>8,245.00</b>
Wreath for Tassell Park	1	299.00		299.00
14' Paramount Tree (multi)	1	6249.00		6249.00
		<b>Total</b>		<b>14,793.00</b>

Both options include a tree for Tassell Park. The tree would be 14' tall, which is the same height as the tree at the Museum Gardens.

The sale at Bronner's ends February 28. Also, if we pay within 10 days of order, we will receive a 1% discount on the order. If neither of these options is acceptable, we can put together a hybrid option at the meeting.

*POLE MOUNTED DISPLAYS // SILHOUETTE  
POLE DECORATIONS*



**WINTERFEST SNWFLK 6' | 1089255**  
\$485.00 | LED \$670.00

**WINTERFEST 5' | 1099270**  
\$435.00 | LED \$595.00

**WINTERFEST 4' | 1108631**  
\$395.00 | LED \$530.00

**WINTERFEST 3' | 1108568**  
\$355.00 | LED \$450.00



**SPIRAL SNWFLK 6' | 1159403**  
\$520.00 | LED \$770.00

**SPIRAL 5' | 1125673**  
\$455.00 | LED \$650.00

**SPIRAL 4' | 1108632**  
\$415.00 | LED \$590.00

**SPIRAL 3' | 1118151**  
\$370.00 | LED \$475.00



**DIAMOND SNWFLK 6' | 1089254**  
\$410.00 | LED \$555.00

**DIAMOND 5' | 1118911**  
\$395.00 | \$510.00

**DIAMOND 4' | 1108630**  
\$380.00 | LED \$475.00

**DIAMOND 3' | 1109106**  
\$335.00 | LED \$385.00



**SNOWFLAKE SILHO 6' | 1041170**  
\$395.00 | LED \$550.00

**SNOWFLAKE 4' | 1074252**  
\$365.00 | LED \$490.00

**SNOWFLAKE 3' | 1098780**  
\$320.00 | LED \$415.00



**PRESIDENTIAL SNW FLK 6' | 1099285**  
\$500.00 | LED \$695.00

**PRESIDENTIAL 5' | 1109107**  
\$460.00 | LED \$645.00

**PRESIDENTIAL 4' | 1118150**  
\$410.00 | LED \$575.00



**SNOWFLAKE CASCADE 8' | 1047865**  
\$720.00 | LED \$975.00



**LEAPING BUCK 5X8' | 1140783**  
\$485.00 | LED \$570.00



**STANDING DEER 8' | 1041429**  
\$520.00 | LED \$675.00



**ORNAMENT TREE | 1088680**  
\$530.00 | LED \$745.00

---

---

## DDA MEMORANDUM

---

---

**To:** Cascade Township DDA Board

**From:** Sandra Korhorn, DDA/Economic Development Director *SKK*

**Subject:** Discuss Synthetic Ice Rink

**Meeting Date:** February 19, 2019

---

Over the years, as we update our Parks, Master and DDA plans, we receive comments from residents about providing activities in the community for people of all ages. Because of those comments, staff has, in the past, considered an ice rink at the Recreation Park during the winter months.

A traditional ice rink requires staff to “flood” an area and spend a lot of time tending to the area so the ice is smooth. Of course, this also requires the perfect temperature so the water will freeze. Once froze, the ice requires maintenance (shoveling/grooming, additional water, etc.). Due to the amount of work required, the Township has not moved forward with a traditional ice rink for the community.

Staff is investigating the possibility of a synthetic ice rink. Synthetic ice has been around for a number of years and is used by professional hockey players, figure skaters down to the casual skater in the community you live. Synthetic ice does not require the perfect temperature therefore, these rinks can be placed in any type of weather.

I have communicated with staff from the City of Ludington and the City of Cadillac, as they both have sheets of synthetic ice in their communities. I am also attaching information from Ice Rink Engineering, the company the City of Cadillac purchased their rink from as well as PolyGlide, the company the City of Ludington purchased their rink from.

These rinks need to be assembled on a hard surface (concrete or asphalt, plywood platform may work as well). Due to this, a potential location for this rink is the property next to the library, which we use for overflow parking during the 4<sup>th</sup> of July. This property is vacant the remainder of the year. The rink can be installed early November and removed late March/early April. Another potential location would be the property adjacent to Noto’s, where we have the skate park located in the Gathering Space Plan.

I am interested in feedback from the DDA board on this idea.

Good morning Sandra.

Hope you are doing well this morning.

Thank you again for your inquiry into our products. I am sorry for the delay in getting this to you.

We offer several synthetic ice products, each with its own characteristics. In most cases our lead products, EZ Glide 350® and EZ Glide 500® are your best choice because their overall performance under all conditions is superior. Hockey stops and side slides, as well as jumps and spins can easily be performed on the EZ Glide surfaces. If it can be done on refrigerated ice, it can be done on EZ Glide!

The EZ Glide 350 has been our number one performing synthetic ice for years. It is tried and true and provides a great surface for home or commercial use. Our most recent release is the EZ Glide 500 panels. It has all the same reliable and practical characteristics of the original EZ Glide 350 with a skating performance that's up to 30% faster.

Both the EZ Glide 500 and EZ Glide 350 products are manufactured specifically for indoor and outdoor use. They are made of a proprietary, compound blend of polymers with special high value UV stability pigments, including natural ice reflective pigmentation and other additives for outdoor, all weather exposure. It is completely UV stable and will not discolor or degrade in direct sunlight or under florescent lighting for the life of the product. Each DoveTail panel measures 46" x 91" dovetail to dovetail or 45" x 90" once connected. The dimensions and pricing given below are based on the 45" x 90" panel size, since the dovetails are normally not considered part of the skating surface.

The EZ Glide panels should be installed on a hard, flat and stable subfloor such as concrete or asphalt. We do not recommend installing directly on grass since heavy rains can cause variations within the earth and can also make the rink extremely dirty and difficult to clean.

The dovetail panels are easy to install and to remove. I compare it to installing life-size puzzles pieces - Lineup the joints and hammer together. When installing a rink of this size you should plan to have a minimum of 6 people on hand. Two people are recommended to get the matting panels lined up while a 3<sup>rd</sup> person hammers together using the mallets furnished. The other 3 people can rotate as needed or assist in moving panels into location. To install the 52 panels should take less than 2 hours.

Please note these panels are not oil injected and will not cause any respiratory problems or any allergic reaction if used. We still use a spray on enhancer with our panels. The EZ Glide Enhancer is to be sprayed on an as needed basis in a light mist form. Although synthetic ice panels can be skated on without the use of an enhancer we, along with the majority of skaters, agree that all synthetic ice products have the best glide and blade life with the use of a topical enhancer. The EZ Glide panels as well as the EZ Glide Enhancer are both environmentally friendly, non-toxic products.

The panels are relatively easy to maintain, you have to keep the surface clean and free of dirt and debris. No matter which synthetic ice you go with if you do not maintain it, blades will dull faster and there will be more resistance in your glide. For an outdoor rink we would recommend a 4000+ psi pressure washer or hard floor surface cleaner similar to those used in cafeterias to clean the surface.

You requested a 50' x 30' rink. Using all full size panels the closest we can get to your dimensions without going over is 48.75' x 30', which I have quoted you on below.

**Rink Option 1 - 48.75' x 30' EZ Glide 350 Rink Package Including:**

52 - 46" x 91" x 1/2" New, EZ Glide 350 DL DoveTail panels @ \$278.00 each = \$14,456.00

15 - Gallons EZ Glide Enhancer

1 – Magna Mat (Used in Conjunction with Enhancer)

1 - Standup Installation Mallet

1 - Installation Manual

1 - Enhancer Sprayer

**Total for Basic Package: \$14,456.00**

**Panel Option 2: EZ Glide 500 Rink Package Including:**

52 - 46" x 91" x 1/2" New, EZ Glide 500 DL DoveTail panels @ \$327.00 each = \$17,004.00

15 - Gallons EZ Glide Enhancer

1 – Magna Mat (Used in Conjunction with Enhancer)

1 - Standup Installation Mallet

1 - Installation Manual

1 - Enhancer Sprayer

**Total for Basic Package: \$17,004.00**

**Recommended Accessory Items:**

1 – Perimeter Edging Kit to “Square Off” DoveTails - \$840.00

1 – 4 Foot Squeegee - \$120.00

4 - Pair Reusable Shoe Covers for staff- \$17.00 per pair = \$68.00

1 – Box of Disposable Shoe Covers - \$46.00

1 - Protective Moisture Membrane (Goes in-between subfloor and panels) - \$120.00

30 - 4' x 3' x ½” Square Edge Rubber Mats for skate lace-up area - \$48.00 each = \$1,440.00

1 - Skate Sharpener - \$1,125.00

100 Pair of Skates - Options Attached

**Freight:** These prices do not include freight. Once you have looked the package over please let me know if you would like to adjust the rink size or add any additional accessories. Once this is finalized I would be more than happy to obtain a freight quote for you.

Sandra, once you look this over, please let me know if you have any questions. I will be out of town for the remainder of the rink. I will be checking my emails as I can, but anyone here at the office can also assist you.

Kindest regards,

Katharine Houston

Ice Rink Engineering & Manufacturing

501 Furman Road

Suite A

Greenville, SC 29609

Phone: 864-232-2591

[Email:kathy@ezglide350.com](mailto:kathy@ezglide350.com)

# Unparalleled Excellence

*Ice Rink Engineering and Manufacturing, LLC services clients around the world, and they've learned to rely on us. They depend on our integrity and truthfulness in guiding them to the best possible product for their particular project and circumstance. Our clients see our years of in-depth experience in this industry as a distinct advantage that serves them well.*



ICE  RINK  
ENGINEERING AND MANUFACTURING, LLC  
— A WORLDWIDE COMPANY —

EZ Glide 350® Synthetic Ice—Simply the Best!

# What does EZ Glide synthetic ice have to offer you?



## Recreational Skaters

Recreational and beginner skaters, including very young children and senior adults, find EZ Glide 350 a safer and more enjoyable alternative to refrigerated ice. Because EZ Glide 350 is slightly less slippery than refrigerated ice, a beginner is far less likely to take a bad fall while learning to skate. This results in fewer injuries and more fun for everyone, regardless of age, coordination or skill level! EZ Glide 350 is being utilized for special events and public skating facilities as an inexpensive alternative to a refrigerated ice system; and because it can be used at any time of year, indoors or outdoors, municipalities are finding it a great addition to summer and winter community events, creating an exciting atmosphere and activity that everyone can enjoy.

## Figure Skaters

Intermediate and advanced figure skaters are insisting on EZ Glide 350 synthetic ice for training because any skill performed on refrigerated ice is easily executed and perfected on this surface. The slight increase in resistance allows a skater to build stamina and muscle strength. It also slows a skater just enough to allow perfecting the edge and body control necessary to perform advanced jumps, spins and footwork. Practicing on EZ Glide 350 will, without question, enhance a figure skater's technique and skill level—coaches and choreographers have proven just that. The transition from EZ Glide 350 to ice and ice to EZ Glide 350 is very easy. Many professional show skaters perform routinely on both types of surfaces on a daily basis. This is the only synthetic surface that adagio skating is consistently performed on.

## Hockey Skaters

Hockey skaters are finding that all their drills, maneuvers, edging and stops are greatly enhanced from practicing on EZ Glide 350 and EZ Glide NC™. Many hockey training facilities have been established within the United States and abroad specifically utilizing the EZ Glide product. As with figure skaters, the muscle strength and stamina realized from practicing on EZ Glide is a huge benefit for hockey training according to many coaches who use the product. Pucks travel easily across the EZ Glide surface, allowing for stickhandling, shooting and passing drills to be performed and perfected. Any hockey maneuver or drill performed on ice can be performed and strengthened on the EZ Glide surface.

## Entertainment Producers / Choreographers / Directors

Entertainment producers are choosing EZ Glide 350 for their venues even though refrigerated ice may be an option. Cost savings are enormous due to quick and easy installation and breakdown times, smaller crews, fewer travel trailers, less specialized equipment, no power requirement and quicker venue-to-venue time. The size of the skating surface can increase or decrease depending on the event parameters, greatly improving booking options. Additionally, the EZ Glide 350 floor can be installed to fit any shape or size stage. The unique design of the Double-Locking (DL) Dove-Tail™ panel allows for a variety of connection options around the perimeter of each panel, maximizing unusually shaped floors and custom staging possibilities.

Choreographers and directors are finding EZ Glide 350 to be far more versatile than ice. From a visual standpoint, the audience does not realize the performer is skating on synthetic ice. Any skill, jump or spin can be performed on EZ Glide 350, including pairs/adagio and ice dancing. Many classical dance techniques that are not suitable for refrigerated ice are performed with ease on EZ Glide 350 due to the slight increase in resistance to the blades. EZ Glide 350 provides just what is needed to blend the artistry of dancing and skating, allowing for a well-rounded, entertaining performance.



# Frequently Asked Questions

## Installation Planning, Product Information and Services

### **What kind of subfloor is necessary for my EZ Glide 350 surface?**

The EZ Glide 350 floor can be installed on any sturdy, flat, level and firm surface. Concrete, asphalt, decks, patios, driveways, tennis courts, etc. are commonly used as subfloors for EZ Glide 350. Many of our floors have been installed in basements, on parking lots, driveways, in theaters, malls, on floats, on simple lumber decking or on the street in Times Square, New York, as an example. Any imperfections or dips in an existing subfloor may be leveled with sand, pea gravel or concrete. Consult our Engineering Department with any questions.



### **What is the lifespan of EZ Glide 350?**

Indefinite, under normal and expected use.

### **What kind of warranty is available for the EZ Glide 350 floor?**

The EZ Glide 350 surface is indestructible under normal use conditions. There is a written 10 year warranty provided with each new surface; however, we have floors that have been in use for 20 years and we have never had one warranty claim.

### **Do you offer installation services?**

Ice Rink Engineering and Manufacturing is a full service company. We offer installation services for refrigerated and synthetic ice rinks and a variety of training services including rink operation procedures, skating surface maintenance and skate sharpening among many others.

### **What do I need to prepare my subfloor prior to installing the panels?**

Prior to panel installation, we recommend laying out a moisture membrane or vapor barrier over your subfloor to protect the panel underside. These vapor barriers are available through Ice Rink Engineering and Manufacturing, LLC.

## Maintenance

### **Does EZ Glide 350 require use of a glide enhancer?**

EZ Glide Enhancer™ is shipped with every floor purchase or rental at no extra charge. Its use will significantly increase the glide performance and reduce blade sharpening. Misting the floor with EZ Glide Enhancer is only necessary occasionally and on an as-needed basis. It takes approximately five minutes to mist a 2400 square foot surface, as an example. Once the Enhancer is applied, spraying periodically with a light mist of water is all that is required.

### **What is the EZ Glide Enhancer made of?**

EZ Glide Enhancer is a specially formulated proprietary material. It is an environmentally friendly product which is safe and non-toxic. Comprised of 50% water in its usable form, the Enhancer is totally water soluble, non-staining and EPA approved. This product works on all three of our different synthetic ice surfaces and greatly increases skating speeds.

### **How often do I have to clean the skating surface?**

Only when the surface shows signs of any matter such as dust, dirt or other foreign particles.





## Skating

### Does synthetic ice skate just like refrigerated ice?

No! But, EZ Glide 350 is as close as it gets! Hockey and figure skating training facilities, public rinks, private outdoor rinks and special event facilities are opening across the globe in great numbers utilizing the 350 product exclusively. Movies, high-profile TV productions and top ice shows use nothing but EZ Glide 350—proving the value, acceptance and great faith in the product.

### How will skating on EZ Glide 350 affect my skating on ice?

According to the large number of coaches using EZ Glide 350 for training purposes, it intensifies practice and results in a far stronger performance on refrigerated ice. Training on EZ Glide 350 will develop a more technically advanced skater, encouraging a skater to perform their movements and skills in proper body form, which makes them stronger, faster and more agile on refrigerated ice. It also encourages a skater to be more aggressive in their approach toward specific movements and skills. This “energy” and speed carries forward onto refrigerated ice, resulting in better all-around performances.

### Can I use my regular ice skates on EZ Glide 350 or do I need special equipment?

You do not need special equipment. Any figure, hockey, speed or rental skate works perfectly on EZ Glide 350 and the surface will not damage your blades.

### How often will I need to sharpen my skates?

Sharpening skates more often on any synthetic ice product is not uncommon; however, the use of the EZ Glide Enhancer significantly reduces wear on the blades. This combined with the special material composition of the 350 product reduces the need for skate sharpening as often as would be necessary when utilizing another synthetic product or enhancer. Maintaining a clean EZ Glide surface will also extend the life of your blades and reduce sharpening considerably.

## Product Specifications, Accessories and Services

**The EZ Glide product line** offers proven superior performance specifically with regards to glide distance, skill execution, product lifespan and user-friendliness. It is the most durable and versatile product on the market today! The preferred product of professionals and amateurs, it is the one we most highly recommend due to its many incredible advantages to the user.

### **EZ Glide 350® Commercial-Grade and EZ Glide NC™ Synthetic Ice Panels**

Our commercial-grade EZ Glide 350 panels are used for heavy training/skating installations, public rinks and theatrical performances. They offer no restrictions or limitations with regards to skating performance—if it can be done on refrigerated ice, it can be done on EZ Glide 350! EZ Glide 350 panels are available in 1/4, 3/8, 1/2, 3/4 and 1 inch thicknesses. While most clients choose the Double-Locking (DL) DoveTail™ connection, the 350 panel is also available in Square Edge (all thicknesses) and Spline styles (for 1/2 inch thicknesses and up).

We also offer a non-commercial style panel, EZ Glide NC, which is designed specifically for residential light-duty hockey practice. EZ Glide NC is available in the 3/8 inch thickness with the Square Edge or DL DoveTail connection style. Additional thicknesses are available upon request.

### **Synthetic Ice Warehouse Panels**

Synthetic Ice Warehouse panels offer another option for our clients. Very popular, each pre-owned panel is closely inspected prior to being entered in the Warehouse for resale. The Synthetic Ice Warehouse panels can be utilized for public skating, figure and hockey commercial training facilities, show skating and residential installations. Sold at a reduced rate, these panels are available in the 1/2 inch thickness, DoveTail style only, and are first come, first serve. Synthetic Ice Warehouse panels are limited in availability and are in high demand. Please call for an inventory list.



### **Double-Locking (DL) DoveTail Connection Style**

Due to their user-friendliness, convenience and versatility, the most popular and safest connection style is our exclusive Double-Locking DoveTail. Installation is quickly accomplished by simply hammering the panels together with the installation mallet that is furnished with every purchase and rental. The Double-Locking (DL) DoveTail style panel is available in 1/4, 3/8, 1/2, 3/4 and 1 inch thicknesses, with the 3/8 and 1/2 inch being our most popular. Each standard panel measures 46 inches x 91 inches. We also offer panels measuring 46 inches x 46 inches, and additional custom sizes are available upon request. The unique engineering design of the EZ Glide Double-Locking (DL) DoveTail allows a wide variety of panel installation configuration options, extending your possibilities with unusual subfloor shapes.



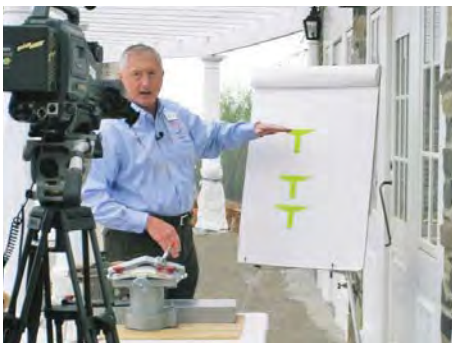
*Durable. Versatile. Affordable.*

**Visit our website!**

**EZGlide350.com**



We stock thousands of figure and hockey skates



Grand opening public announcement for TV



### Custom Options

EZ Glide 350 panels are offered in special order colors and with the option of having your logo printed on the surface of a single panel, or printed seamlessly over multiple panels as seen in the Smirnoff Ice photo below. Please call for details.

### Products, Accessories and Services

Ice Rink Engineering is a full service company. We offer a wide variety of products and services to accommodate any project requirement. We assist our customers through the process of selecting and purchasing or renting the correct products for their application. We also offer services ranging from rink installation, operation management training, theatrical shows and more.

#### Synthetic Ice Rink Products Include

- EZ Glide 350 Commercial-Grade Synthetic Ice*
- EZ Glide NC Light-Duty Synthetic Ice*
- Ice Tec 310™ & SuperSlick HD™ Synthetic Ice*
- DoveTail, Spine & Square Edge Connection Styles*
- Environmentally Friendly EZ Glide Enhancer™*
- NHL & IIHF Synthetic Ice Goal Creases*
- Perimeter Edging Kits*
- Custom Printed Logo Panels*
- Commercial-Grade EZ Glide Enhancer Sprayers*
- Professional & Rental Figure & Hockey Skates*
- Rubber Matting*
- Rink Enclosures, Dasher Boards & Kick Plates*
- Skate Sharpeners & Components*
- Commercial Fog, Artificial Snow & Bubble Machines*
- Synthetic Ice Travel & Storage Crates*

#### Services Include

- Synthetic Ice Sales, Rentals & Installation*
- Refrigerated Ice Rink Sales, Installation & Service*
- Synthetic & Refrigerated Ice Engineering Services*
- On-Site Consulting Services*
- Skate Sharpening Services & Training*
- Rink Operations Training*
- Exhibition & Ice Show Production*
- Professional Show Skaters / Instructors*
- Private Skating Studio Rental*
- Figure & Hockey Skate Sales & Rentals*
- Refrigeration Mechanical Service*
- Refrigeration Technical Service*
- Figure & Hockey Skating Training Camps*

**Each project, no matter how large or small is unique in and of itself.**  
 If you require special assistance, we will be more than happy to accommodate you.  
 We will design an individual quote based on your needs.



High-profile outdoor rink



Custom panel printing

# EZ Glide 350® Double-Locking DoveTail™ Panel Technology—Simply the best!



## EZ Glide 350 Double-Locking (DL) DoveTail Panel... The Preferred Product

Ice Rink Engineering and Manufacturing, LLC offers a selection of synthetic ice products, and three unique connection styles—DL DoveTail, Square Edge and Spline.

*Our most popular commercial-grade EZ Glide 350 panel in the Double-Locking (DL) DoveTail style is the product that training centers and entertainment production companies, including Disney On Ice, insist on for their projects when refrigerated ice is simply not an option. It is also, by far, the preferred product for the general public and commercial skating facilities.*

### Why Choose Our Exclusive Double-Locking DoveTail Panel?

Ice Rink Engineering and Manufacturing is the originator of the DoveTail design. Until recently, Ice Rink Engineering was the only synthetic ice company offering the DoveTail style panel, and although others have attempted to copy our unique design, it is still unsurpassed by anyone in this industry. Our exclusive DoveTail design has a unique Double-Locking feature manufactured into the DoveTail panel. **When installed correctly, EZ Glide 350 DL DoveTail panels will not separate vertically or horizontally.** This essential Double-Locking design feature is standard on all of our DoveTail panels and is not offered by any other synthetic ice company today.



Designed to withstand limitless installations and removals without fail, the Double-Locking design also eliminates any issues with expansion and contraction caused by temperature variances, a serious problem with other dovetail designs. Whether used indoors or out, it offers the most secure panel-to-panel connection, amplifying surface strength and integrity.

These panels are indestructible and will not break, warp or bend under any normal use, indoors or out. Additionally, the design allows for a variety of floor shapes and installation options not offered anywhere else.



*Our exclusive Double-Locking (DL) DoveTail design has played an instrumental role in separating our DoveTail from the competition.*

Visit our website!  
[EZGlide350.com](http://EZGlide350.com)



Our Double-Locking (DL) DoveTails make installation and removal of the panels very quick and simple, ensuring a secure and reliable surface in any weather, climate or location, be it desert conditions or sub-zero temperatures.

We are constantly researching the performance of our products through feedback from our customers—which has been outstanding! Our customers have discovered that our exclusive Double-Locking DoveTail design performs in leaps and bounds beyond others available on the market. The EZ Glide 350 DL DoveTail panel is the safest and most durable available because its unique design allows a figure skater to perform the same jumps, spins and footwork as on refrigerated ice with confidence, security and a trust in the product. Many hockey training centers throughout the world have installed the EZ Glide 350 DL DoveTail panels and report unmatched success in installation, maintenance and performance.

*The Skater's Choice - The DoveTail style panel is the number one choice for hockey and figure skating, hockey training facilities, private skating studios, public skating venues and the entertainment world.*

# EZ Glide 350® and EZ Glide NC™—Outstanding Performance

## Delivering Superior Results—Inexpensive. Low Maintenance. Supremely Effective.



Through continuous years of research and development, Ice Rink Engineering and Manufacturing has responded aggressively and eagerly to the shortcomings of the synthetics on the market, including those we have sold since the 1960's. Our newest and most popular products are EZ Glide NC and the commercial-grade EZ Glide 350 Double-Locking (DL) DoveTail™ panels. The EZ Glide product line is distinctive among all synthetic ice skating surfaces available on the market today. It is the leader in the marketplace and the overwhelming choice of the top names in the skating industry.

### **EZ Glide NC and EZ Glide 350 Double-Locking (DL) Panels**

EZ Glide NC is a lightweight panel designed for low intensity residential hockey practice. It has all the same outstanding skating qualities as the commercial-grade EZ Glide 350 panel, with the exception of a less dense center core, making the panel less expensive to manufacture, and less expensive to ship. EZ Glide NC is only recommended for light-duty hockey practice, whereas the commercial-grade EZ Glide 350 DL DoveTail panel can be utilized for any and all types and styles of skating, both commercial and residential. Each EZ Glide 350 skating panel is comprised totally of the 350 skating material—no layers or laminates; and the material does not change its characteristics under extreme temperature conditions, unlike other synthetic ice products. This allows for skating on both sides of the product and many years of satisfaction. EZ Glide 350 is our top selling product and is chosen by consumers because of its versatility, user-friendliness, and most importantly, its extraordinary skating characteristics under the widest range of conditions. If it can be done on refrigerated ice, it can be done on EZ Glide 350!



### **Panel Technology**

When skating on refrigerated ice, one fact remains true: the more contact between a skater's blade and the skating surface, the faster the glide. This is not true of skating on synthetic surfaces; the less contact between the blade and the synthetic surface, the faster the glide. With this in mind, EZ Glide panels are designed with a special beaded surface which, when new, mimics a surface that has been seasoned from skating; thus reducing friction to the blades. The result is a faster, longer glide and better puck performance. This unique beading characteristic ensures that skating on EZ Glide is the same on day one as it is in year ten. As the surface is used, the beading is worn away and replaced with the normal scratches and scarring from the blades that continue to enhance skating speed.



*For success, do as others do—go EZ Glide!*



*Cutting Edge Technology*

**Visit our website!**

**EZGlide350.com**



### Long-Lasting

All EZ Glide 350 and NC skating surfaces are totally UV stable, making them perfect for indoor or outdoor use. They are warp resistant and will not change color or degrade even in permanent outdoor installations. They cannot be damaged by wind, rain, sleet or snow, nor will the performance of the surface be inhibited over time by sunlight or inclement weather. Both surfaces are manufactured as stress relieved polymers to ensure that they will always return to flat and level, if an event such as improper storage should cause them to warp or bow. This is one of many properties unique to EZ Glide skating surfaces. EZ Glide 350 comes with a 10 year limited warranty while EZ Glide NC comes with a 5 year limited warranty. The actual life expectancy has proven to be far longer.

### Minimal Maintenance

There is very little maintenance, with the exception of keeping the surface clean. Suitable cleaning of the surface can be achieved using water only. Plain water does an efficient job cleaning the EZ Glide surface because dirt does not impregnate into the unique surface and the environmentally friendly EZ Glide Enhancer™ is totally water soluble.



### Environmentally Friendly

EZ Glide synthetic ice skating surfaces and the EZ Glide Enhancer are all environmentally friendly products. All scrap material accumulated during the Spline, Square Edge and DoveTail production is reconstituted into the extrusion process. The EZ Glide Enhancer is EPA approved, safe, non-toxic and non-staining. It is not a silicone based product and when applied correctly, is undetectable on the surface.

### EZ Glide Enhancer

A spray-on glide enhancer is included with every surface purchased or rented. We recommend misting the EZ Glide Enhancer over the surface to increase glide performance and reduce blade sharpening. It is very easy to apply and is only necessary occasionally and on an as-needed basis. It is possible to skate on any synthetic ice without enhancer, however, in order to achieve top performance and less blade wear, all synthetics will require an enhancer.

### Outstanding Benefits

EZ Glide 350 and EZ Glide NC synthetic ice surfaces are affordable and have proven to be great, long lasting options for uses that do not justify the high cost of refrigerated systems. The EZ Glide product line is the most popular synthetic for skating and the product which most closely resembles refrigerated ice in skating performance. Anything that can be done on refrigerated ice can be done on EZ Glide 350! EZ Glide provides a unique opportunity for skaters to perfect their skills and technique, allowing them to be stronger skaters on refrigerated and synthetic ice. Both products have an outstanding, long lifespan with high performance in all categories for the consumer. EZ Glide 350 and EZ Glide NC are exceedingly beneficial in developing the skill level for every age. They are both great for applications indoors or out, in any kind of weather.



### **EZ Glide Enhancer Sprayers**

When maintaining the EZ Glide 350® surface, it is recommended that you keep two garden sprayers on hand, one for water, and the other for EZ Glide Enhancer.

The EZ Glide Enhancer Sprayer is commercial-grade and has been tested and proven to consistently cast a fine mist of Enhancer across the EZ Glide 350 surface. Easy to use, these sprayers deliver uniform results every time, saving the user on maintenance time and Enhancer costs from over-spray.



### **EZ Glide Enhancer™ and X-3 Premixed EZ Glide Enhancer™**

Original EZ Glide Enhancer and X-3 Enhancer are non-toxic, non-staining spray-on glide enhancers developed by Ice Rink Engineering and Manufacturing, LLC for use on EZ Glide synthetic ice surfaces. EZ Glide Enhancer and X-3 have been proven to out-perform any other glide enhancer on the market, significantly increasing glide distance per stroke and reducing the need for skate sharpening. Original EZ Glide Enhancer is received in its concentrated form and should be mixed to your specifications. One concentrated gallon will spray a minimum of 5,600 square feet of skating surface. X-3 arrives pre-mixed and ready to use for your convenience. Application is accomplished using the EZ Glide Sprayer to cast a fine mist across the skating surface. Application of either Enhancer is only necessary occasionally and on an as-needed basis. Both Enhancers are totally water soluble, environmentally friendly and EPA approved.

An order of Enhancer is shipped complimentary with every synthetic ice purchase. Should you desire to purchase additional Enhancer, it is available in one-half, one, five, and fifteen gallon containers. Drum size quantities are also available for training facilities and public skating rinks. The larger quantity purchased, the lower the per gallon price.

### **DT-7H Extreme Enhancer™**

The new Dry Touch DT-7H Extreme Enhancer will skate better, last longer and cost less in maintenance than previous enhancers. It is environmentally friendly and safe for use. It will also reduce surface friction and the frequency of blade sharpening. As drying occurs, the DT-7H adheres to the skating surface. One application can last for weeks or months, even after cleaning. (One gallon of DT-7H should allow for spraying up to 2,500 square feet of skating surface.) For maximum speed many rink owners will spray a light mist of Original or X-3 Enhancer across the surface just prior to skating.



### Protective Moisture Barrier & Friction Reducer

A moisture membrane or vapor barrier should be placed between the EZ Glide 350 synthetic ice surface and the subfloor to aid in easier expansion and contraction of the skating surface and to protect the subsurface from any Enhancer that may reach the underside of a panel.

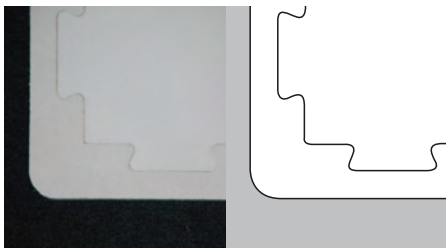
Moisture membranes are offered in 20' x 50' and 20' x 100' rolls.



### Shoe Covers

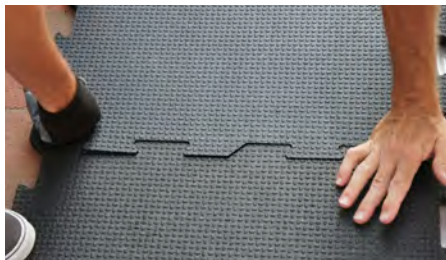
When conducting maintenance or spraying EZ Glide Enhancer on the EZ Glide 350 surface, covering shoes is recommended to keep the skating surface clean and free of dirt and debris. By doing so, skate blades will remain sharp far longer and the skating surface will continue to perform at its optimum level without the necessity of cleaning.

Disposable and Reusable shoe covers are available for purchase.



### Perimeter Edging Kit

The Perimeter Edging Kit is designed to create a clean, straight line on the outer edge of the EZ Glide 350 DL DoveTail floor. The number of pieces required to border a rink is determined by the exact dimensional layout of the skating surface. These accessory pieces install in the same manner as the DoveTail skating surface. You simply hammer them into place with the installation mallet that is furnished with your floor. Once you determine the dimensional layout of your skating surface, we can easily calculate the number of pieces required for your Perimeter Edging Kit and offer pricing at that time.



### Rubber Matting

Rubber matting is often used in areas where skates will be laced up and any locations where someone may walk while wearing skates, such as bathrooms or locker rooms. The rubber matting is to ensure the skate blades as well as the subfloor are protected from damage. Mats are UV stable and available in Square Edge and Dovetail assembly styles.



### Heavy-Duty Squeegees

A great addition to the arsenal of tools that make it convenient to maintain any synthetic ice surface, the construction makes it easy to assemble, use and store away. These heavy-duty squeegees do a great job removing water and spreading the Enhancer evenly across the skating surface. Extremely dependable and durable, these squeegees are available in four foot widths. Other sizes available by special order.



### Skates

Ice skates are available for purchase in both figure and hockey styles and come in a variety of sizes ranging from child size 8 through adult size 15. When you are ready to purchase skates for your project, Ice Rink Engineering will create a skate stock completely customized to your needs. We will conduct all necessary post-factory professional sharpening so that you receive the skates ready for immediate use. Ice Rink Engineering will also advise you of the appropriate care and maintenance of the skates, including sharpening guidance and skate storage rack design, so that they are well-maintained in excellent condition for years to come.



### Skate Sharpeners

We recommend the Wissota 911 tabletop skate sharpener. It comes complete with #3-D three dial skate holder, wheel, diamond and instructional manual and DVD. This sharpener is also available with multiple accessories, including a sturdy carrying case. Power: 115V, 60Hz, single phase 3450 RPM Motor.



### Dasher Boards and Rink Perimeters

Ice Rink Engineering and Manufacturing, LLC can assist you in selecting the correct rink perimeter for your project. Rink perimeters can consist of complete factory installed dasher board assemblies, “do it yourself” component packages for dasher boards, aluminum or steel hand rails, or rails built using high grade lumber. Public rental events often opt for decorative picket fencing, see-through perimeters or other types of easy-to-assemble and low-cost barriers. There are many options available to you for use as rink perimeters. We can assist you with any of these or introduce you to other possibilities!



### Kick Plates, Top Plates and Dasher Face Plates

The kick plate is the yellow strip of plastic seen at the bottom of the dasher board wall. It protects the dasher wall from the constant impact of skate blades at the ice surface.

The red top plate will give a finished look to the dasher wall and can be applied as a top mount to the dasher board or mounted flush directly to the support wall, depending on your particular application.



Dasher board face plates, kick plates and top plates can be mounted to a pre-existing wall or a 2 x 4 lumber system, which will give the user the same look and feel of a full dasher system without the cost and construction. All components are UV stable and can be used indoors or outdoors year-round.

All prices are in US dollars and do not include freight.

All panel orders include a complimentary shipment of environmentally friendly EZ Glide Enhancer, installation mallet and a detailed instructional manual.

**From:** Jim Loughran <info@polyglideice.com>  
**Sent:** Tuesday, February 12, 2019 2:43 PM  
**To:** Sandra <Sandra@cascadetwp.com>  
**Subject:** RE: Information Request re: Synthetic Ice Rink

Hi Sandra.

Thank you for your reaching out regarding our PolyGlide Synthetic Ice surfaces.

In response to your recent questions:

1. What type of material is the “ice” made from? ***Polyethylene plastic polymer***
2. Can the rink be installed on grass? ***Surface must be installed on a hard/flat substrate (plywood platform works great for events)***
3. Is the product easy to install and remove? ***Yes, the panels have a “dovetail” profile that easy clicks and locks together!***
4. What product would you recommend for casual usage? ***Our PolyGlide Pro-Glide surface is durable and does not require any surface spraying.***
5. Can you give me the approximate cost of a 30’x50’ rink (I understand this will not be a quoted price for the purchase of a rink)? ***Sure (see below)***
6. What type of maintenance is required? ***Just keep the surface clean when you see any dirt accumulation (power-washing works well 😊)***

Here’s the Breakdown for your rink:

**PolyGlide Pro-Glide \*Infused, 30’ X 50’ Rink Footprint\*\***

56 – PG Pro-Glide, ½” X 46” X 92” Synthetic Ice Panels = \$18,995

***\*Infused Surface Offers Optimal Glide & Performance – No Surface Enhancers Required***

***These panels have a smooth finish and are infused with a UHMW slip agent.***

***\*\*For “Actual” dimensions each panel measures ½” X 46” X 92” with an 1-1/2” dovetail seam***

Feel free to provide additional information that I may not be thinking of:

***Assorted Ice Skates (75) : \$4,650***

***Skate Sharpener: \$1,275***

***Shipping to 49546: \$770***

Please call or email me when you have time to review your quote!...TY! – Jim



Jim Loughran

[jim@polyglideice.com](mailto:jim@polyglideice.com)

PolyGlide Ice

PH: 855-765-9423

C: 516-776-7185





FOR THE 31st ANNIVERSARY

**celaris**  
www.celaris.com



THE CHILDREN'S PLACE

WYNDEN