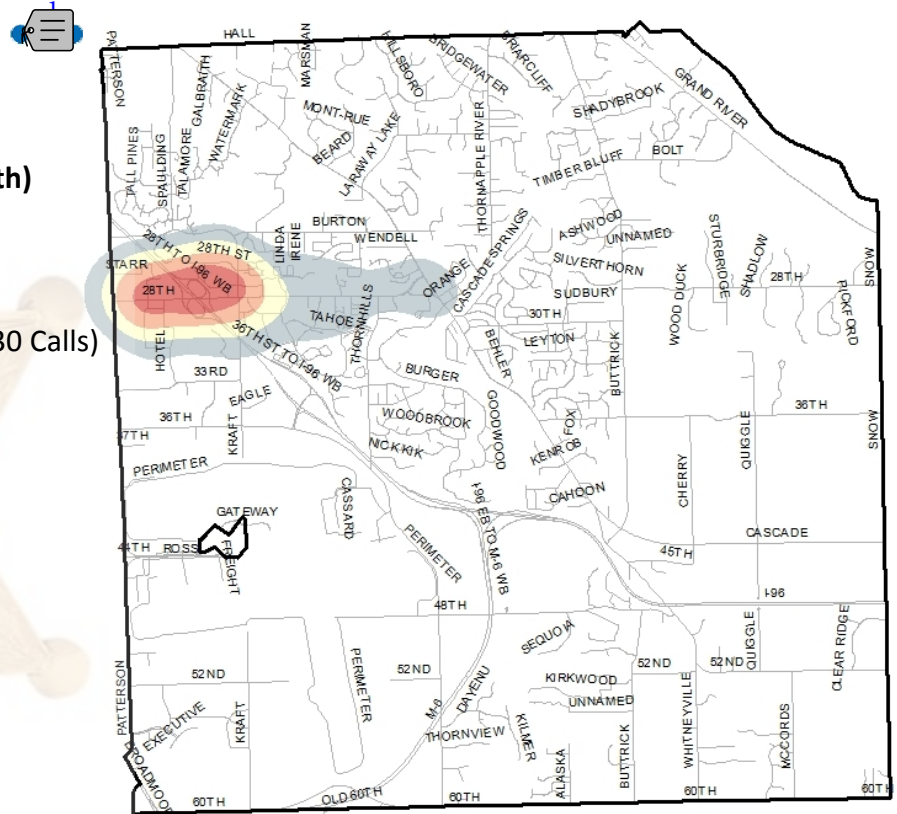




Kent County Sheriff's Office

Calls for Service "Hotspot" Map

-
-
- **Total 2020 Qtr Reported Offenses: 1006 (5th)**
- **Top 3 Calls For Service:**
 1. Alarm (741 Calls)
 2. Suspicious Condition/Noise/Subject (430 Calls)
 3. Assist (288 Calls)
- **Top 3 Repeat Call Addresses:**
 1. 5100 Blk 28th ST SE (359 Calls)
 2. 5500 Blk 28th St SE (335 Calls)
 3. 4900 Blk 28th St SE (112 Calls)
- **Top 3 Responding Units:**
 1. 4321 (945 Calls)
 2. 4121 (792 Calls)
 3. 4425 (786 Calls)



Legend

- Low Density
- Medium
- Medium High
- High Density



Click on flame for hotspot details

- **Avg. # of Units Assigned Per Call: 1.91**
- **Avg. Hold Time: 6 Min, 47 Seconds**
- **Avg Response Time: 17 Min, 13 Seconds**
- **Top 3 Crimes**
 1. Retail Fraud - 127
 2. Driving Law Violations - 97
 3. Domestic Simple Assault - 77
- **Total Detective Bureau Time: 1,423 Hours (2nd)**