


A photograph of a park scene. In the foreground, several vibrant pink flowers with bright yellow-orange centers are in focus. The background shows a green lawn, a paved path, and a large, modern building with a prominent vertical wooden slat. The sky is clear and blue.

Parks & Recreation Quarterly Report

Tassell Park

Significant masonry work needed



A photograph of a garden bed. In the center, there is a large, rectangular, light-colored rock. The garden bed is filled with several clumps of hosta plants, which have large, green, heart-shaped leaves and some tall, thin stems. The plants are growing in dark soil. To the left of the rock, there is a dense, green, bushy plant. The background is a well-maintained green lawn. The text "Utilizing plants from medians to fill in where landscape plants have died." is overlaid in the upper right corner of the image.

Utilizing plants from medians to fill in where landscape plants have died.



Wycliffe Trailhead Park

Working on initial and long-term improvements.

Installing natural trail with a workday this fall,
including improving access through the easement
seen below.



Cascade Recreation Park

Planted 42 native trees (mostly) and shrubs as part of the DTE Foundation's Tree Planting grant.



Used multiple sources including Calvin Colleges Plaster Creek Steward Program's stock which allowed for more uncommon native trees.



Secured contractor to replace the gazebo and small picnic shelter rooves.



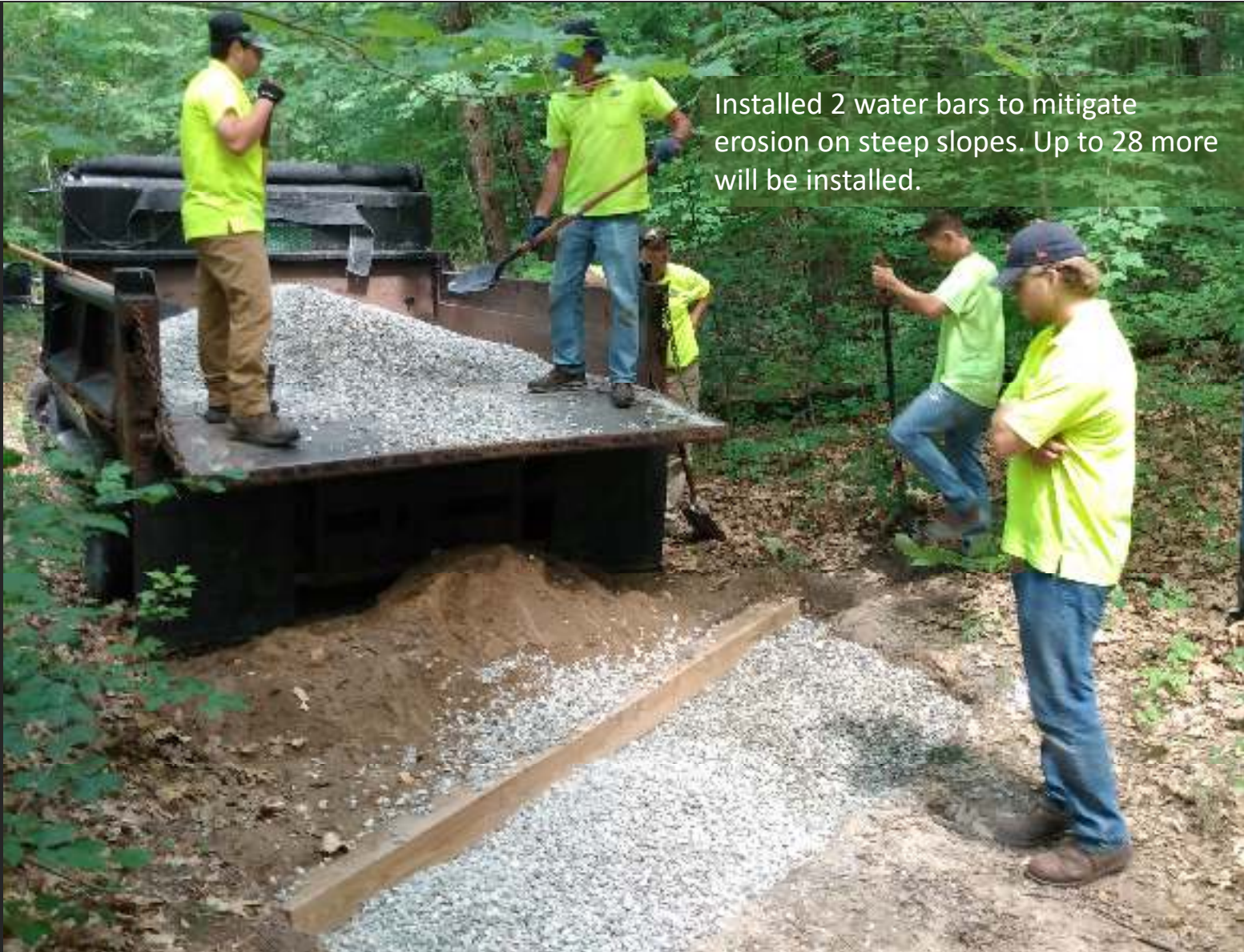
Peace Park

Held a workday to remove autumn olive with the guidance of the Parks Committee to continue the work that the Kent Conservation District has been doing.



In partnership with the Fire Department, Parks Committee (news member Bill Otten on previous slide), Cascade residents and Buildings and Ground crew.





Installed 2 water bars to mitigate erosion on steep slopes. Up to 28 more will be installed.

Hired two new employees. Ryan McCarty (front center) is the new Buildings and Grounds Supervisor and Jeanine Heibel is the new Volunteer Coordinator.



Burton Park

Kent Conservation District continued to manage invasive species at Burton Park, Peace Park and the library. Jessie Schulte volunteered her time to train the community to help manage this biological pollution on a landscape level.



Permanent plaque at Westdale Memorial Park



WESTDALE MEMORIAL PARK



TECHNICAL CORPORAL
VIRGIL W. (NISHIMURA)
WESTDALE

8 JANUARY 1918 - 8 FEBRUARY 2021

Local Judeo-Christian
American Patriot Warrior and Hero

Farm Boy, Pilot, WWII Combat Veteran,
Scientist-Inventor, USA Sr. Security Agent

522nd Field Artillery Battalion /
442nd Regimental Combat Team

To Learn More: *Blue Skies and Thunder*