

CASCADE CHARTER TOWNSHIP
THORNAPPLE RIVER SAD AD-HOC COMMITTEE MEETING
February 6, 2023 at 5:30pm
Cascade Township Hall
5920 Tahoe Dr. SE
Grand Rapids, MI 49546

ZOOM LINK: <https://us02web.zoom.us/j/86932707144>

- ARTICLE 1.** Call the Meeting to Order
- ARTICLE 2.** Approval of the Agenda
- ARTICLE 3.** Acknowledge Visitors & Public Comment
- ARTICLE 4.** Approval of the Minutes of the 12.05.22 Meeting
- ARTICLE 5.** 2022 Water Quality Testing results
- ARTICLE 6.** State Uniform Waterway Marking System
- ARTICLE 7.** Roundtable Q&A
- ARTICLE 8.** Public Comment
- ARTICLE 9.** Adjournment

MINUTES
Cascade Charter Township
THORNAPPLE RIVER SAD AD-HOC COMMITTEE MEETING
December 5, 2022 at 5:30pm
Cascade Charter Township Hall
5920 Tahoe Dr. SE
Grand Rapids, MI 49546

ARTICLE 1. The meeting was called to order at 5:30pm.

Members Present: Members Michael Wiegand, Leann Rowland, Scott Rissi, Thomas Keith and Jeff Carpenter

Members Absent: Trustee Shipley, Chuck Whitley

Others Present: Township Manager (TM) Ben Swayze,

ARTICLE 2. Approve the current Agenda

Motion was made by Member Rissi to approve the agenda as written. Supported by Member Rowland. Motion carried.

ARTICLE 3. Acknowledge Visitors & Public Comment

There were not any visitors who wished to comment at this time.

ARTICLE 4. Approve the Minutes of the July 25, 2022 and 10.3.22 Meeting

Motion was made by Member Rissi to approve the minutes. Supported by Member Carpenter. Motion carried.

ARTICLE 5. 2023 Thornapple River SAD Budget

TM Swayze reviewed the proposed budget with the committee. The budget has \$60,000 for the weed control program, \$10,000 for contractual services (potential debris clearing), \$5,000 for engineering (potential marking system) and \$5,000 for administrative costs. The proposed budget, if followed, would add \$14,000 to the fund balance for potential future projects. Discussion ensued.

Motion was made by Member Rissi to recommend the budget to the Township Board for approval. Supported by Member Rowland. Motion carried.

ARTICLE 6. State Uniform Waterway Marking System

Member Carpenter reviewed the waterway marking diagrams provided to the group, including current know and marked obstacles. The Committee held significant discussion regarding the need for a waterway marking system. TM Swayze indicated he would touch base with firms that may be able to provide these services and report back at the next meeting.

ARTICLE 7. 2023 Meeting Schedule

The committee reviewed the meeting schedule and recommended the meeting schedule remain the same for 2023 – the 1st Monday of the month at 5:30. January meeting can be held on the 9th (to avoid the holiday) or possibly cancelled if no new information is available yet.

ARTICLE 8. Roundtable Q & A

None

ARTICLE 9. Public Comment

None

ARTICLE 10. Adjournment

Motion was made by Member Wiegand to adjourn. Supported by Member Rissi. Motion carried. The meeting was adjourned at 6:23 p.m.

Approved by the Thornapple River SAD Ad-Hoc Committee - TBD

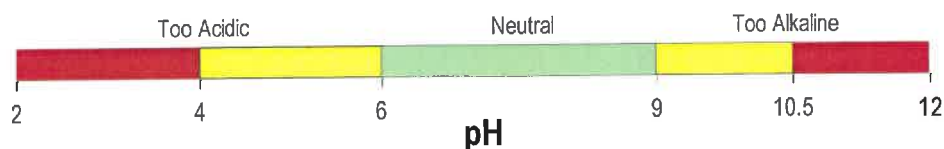
DRAFT

LAKE CHECK WATER QUALITY MEASUREMENTS

Conductivity and Total Dissolved Solids (TDS) measure the total amount of material dissolved in the water. Higher values indicate potentially richer, more productive water, whereas lower values indicate potentially cleaner, less productive water. Localized increases in conductivity and TDS may indicate inputs of groundwater or other nutrient-enriched water. [Note: Human activities that result in nutrient pollution (e.g., fertilizer runoff) can increase the productivity of algae and other organisms without raising conductivity/total dissolved solids very much. If nutrient pollution is occurring, the total phosphorus concentration is a much better indicator of potential productivity.]



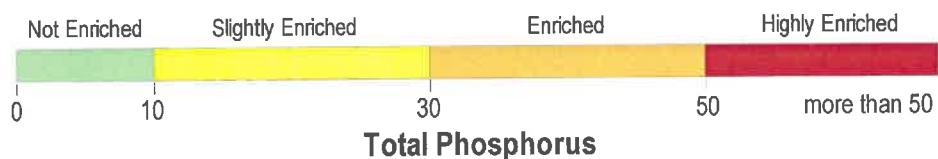
pH describes the balance between acids and bases in the water. Neutral values of pH (between 6 and 9) are desirable. Low pH values typically result either from the growth of bog vegetation (such as peat moss), acid precipitation ("acid rain"), or acid runoff (as in acid mine drainage). Excessive growth of certain plants and algae can raise pH values above 9.0 or 10.0.



Alkalinity measures the concentration of carbonates and bicarbonates in the water. These compounds and other ions associated with them make water "hard". High alkalinity lakes are hardwater lakes, while low alkalinity lakes are softwater lakes. Different kinds of plants, algae, and other aquatic organisms live in hardwater than in softwater. Alkalinity also influences the effectiveness of some herbicides and algicides. Alkalinity is a basic characteristic of water, but is neither inherently good nor bad.



Total Phosphorus measures the total (organic and inorganic, dissolved and particulate) amount of phosphorus in the water. Phosphorus is usually the plant nutrient (i.e., fertilizer) that controls the amount of algal growth in lakes and ponds. Most Midwestern lakes have more phosphorus and more algae than is desirable, so lower values are generally better, though very unproductive water bodies typically support little fish production.



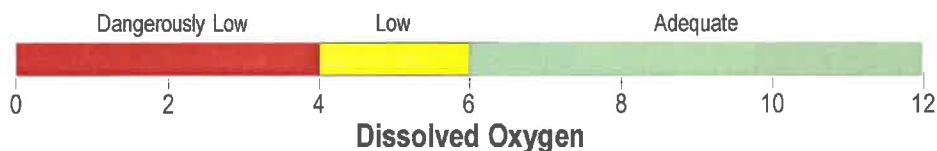
Nitrate measures the total inorganic amount of nitrogen in the water. Nitrogen is the plant nutrient (i.e., fertilizer) most likely to control the amount of rooted plant growth in lakes and ponds. Most Midwestern lakes have more nitrogen and more rooted plant growth than is desirable, so lower values are generally considered better.



Trophic State Indices calculate the trophic status of the waterbody. Waterbodies are classified as oligotrophic, mesotrophic, eutrophic or hypereutrophic depending on the overall amount of plants, algae and other organisms the waterbody supports. Lakes of different trophic states vary in a number of chemical characteristics and support different types of organisms (see the enclosure “Lake Trophic States and Eutrophication”). Thus the trophic state of a waterbody provides a wealth of information concerning the types of organisms living in the waterbody, the processes likely to occur there and the kinds of problems to be expected. Trophic State Index values can be calculated from a number of variables. LakeScan calculates Carlson’s Trophic State Index (TSI) from total phosphorus, Secchi disk depth and chlorophyll (separate TSI values are calculated for each of the variables that was measured as part of your LakeCheck package).

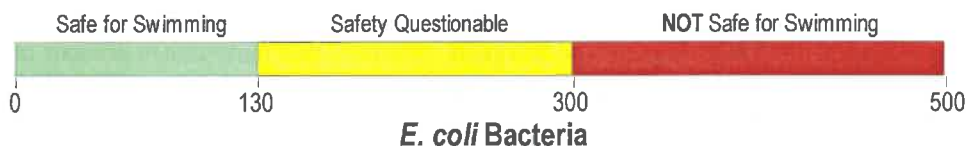


Dissolved Oxygen is a measure of the amount of oxygen dissolved in the water. Oxygen is needed by fish and other aquatic organisms to allow them to “breathe” underwater. Plants and algae produce oxygen by photosynthesizing during the day and use oxygen for respiration at night.



Temperature provides information about the kinds of fish that can grow in a lake, information necessary for interpretation of other parameters, and information about the extent to which a lake is stratified into layers having water of different temperatures. If the lake is stratified, the **thermocline depth** tells how deep the surface layer of warm water is.

Fecal Indicator Bacteria (*E. coli*) measurements count the number of live fecal indicator bacteria in the sample. These bacteria are considered reliable indicators of fecal contamination—when they are found in a pond or lake, it is very likely that the water is being contaminated by animal feces. Contamination can potentially be derived from a number of sources, including failed septic systems, agricultural runoff, or waterfowl or wildlife droppings.



- *E. coli* counts of 300 (CFU/100 mL) and above in a single sample are considered to represent conditions that are **UNSAFE** for swimming and other body contact recreation.
- *E. coli* counts of 130 (CFU/100 mL) and above averaged (using a geometric mean) over measurements made during a 30-day period are considered to represent conditions that are **UNSAFE** for swimming and other body contact recreation. When values of 130 (CFU/100 mL) or higher but less than 300 are encountered, LakeCheck rates the safety of the water for swimming as questionable.
- *E. coli* counts below 130 are considered safe for swimming and other body-contact recreation

We recommend prompt retesting whenever Fecal Indicator Bacteria counts exceed 100 (CFU/100 mL) to determine whether contamination is an ongoing problem. If frequent contamination is detected, steps to identify and eliminate the source of contamination are highly recommended.

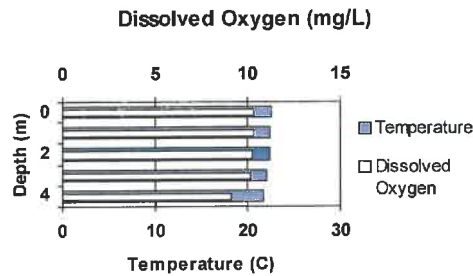


Water Quality Monitoring Report

Customer	Waterbody	Sample Information
Thornapple River Cascade	Thornapple River Cascade	Date: 5/19/2022
		Site: #1

On-Site Results

Depth (m)	Temperature (degrees C)	Dissolved Oxygen	
		mg/L	%
0	22.5	10.3	105
1	22.4	10.3	105
2	22.4	10.3	105
3	22.1	10.1	102
4	21.6	9.1	95



Secchi Disk Depth	1.5 meters
Thermocline Depth	meters

Analytical Results

Parameter	Result	Units	Interpretation
Fecal Bacteria (E. coli)		CFU/100 mL	N/A
Conductivity	530	uS/cm	Moderate concentration of dissolved salts
Total Dissolved Solids	375	mg/L	
pH	8.6	S.U.	Water is slightly alkaline
Alkalinity	240	mg CaCO3/L	Water is very hard
Total Phosphorus	36	ug/L	Phosphorus enriched
Nitrates	1200	ug/L	Moderately nitrogen enriched
Chlorophyll	N/A		

Trophic State Evaluation

	TSI	Trophic Status
Based on Secchi Disk Depth	54	moderately eutrophic
Based on Total Phosphorus	51	moderately eutrophic
Based on Chlorophyll	N/A	

Conclusions

- Conditions are good for fish growth.
- Minimum dissolved oxygen is adequate for good fish production.
- pH is within acceptable limits.
- Sample is somewhat phosphorus enriched. Create natural buffer between lawn & lakeshore.
- Sample is nitrogen enriched. Consider nutrient abatement measures.
- Repeat LakeCheck in Fall.

-
- WARNING. condition requires immediate attention.
 - CAUTION. condition requires further evaluation.
 - OK. condition within acceptable limits.
 - NEUTRAL. condition neither good nor bad.

Notes

Report describes conditions at the time the sample was collected.

Approved by

Jaimee Desjardins

Date 10/31/2022

Mrs. Jaimee Desjardins, Technical Services Manager

FROM YOUR



DEALER



PLM Lake & Land Management Corp

P.O. Box 132

Caledonia MI 49316-

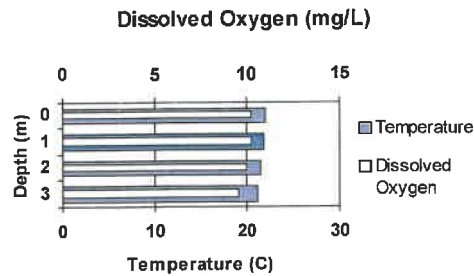
Phone: (616) 891-1294

LAKE CHECK Water Quality Monitoring Report

Customer	Waterbody	Sample Information
Thornapple River Cascade	Thornapple River Cascade	Date: 5/19/2022
		Site: #2

On-Site Results

Depth (m)	Temperature (degrees C)	Dissolved Oxygen	
		mg/L	%
0	22.0	10.3	101
1	21.9	10.2	99
2	21.5	10.0	98
3	21.1	9.6	93



Secchi Disk Depth	1.5 meters
Thermocline Depth	meters

Analytical Results

Parameter	Result	Units	Interpretation
Fecal Bacteria (E. coli)		CFU/100 mL	N/A
Conductivity	533	uS/cm	Moderate concentration of dissolved salts
Total Dissolved Solids	378	mg/L	
pH	8.6	S.U.	Water is slightly alkaline
Alkalinity	242	mg CaCO ₃ /L	Water is very hard
Total Phosphorus	40	ug/L	Phosphorus enriched
Nitrates	1250	ug/L	Nitrogen enriched
Chlorophyll	N/A		

Trophic State Evaluation

	TSI	Trophic Status
Based on Secchi Disk Depth	54	moderately eutrophic
Based on Total Phosphorus	53	moderately eutrophic
Based on Chlorophyll	N/A	

Conclusions

- Conditions are good for fish growth.
- Minimum dissolved oxygen is adequate for good fish production.
- pH is within acceptable limits.
- Sample is somewhat phosphorus enriched. Create natural buffer between lawn & lakeshore.
- Sample is nitrogen enriched. Consider nutrient abatement measures.
- Repeat LakeCheck in Fall.

-
- WARNING. condition requires immediate attention.
 - CAUTION. condition requires further evaluation.
 - OK. condition within acceptable limits.
 - NEUTRAL. condition neither good nor bad.

Notes

Report describes conditions at the time the sample was collected.

Approved by

Jaimee Desjardins

Date 10/31/2022

Mrs. Jaimee Desjardins, Technical Services Manager

FROM YOUR



DEALER



PLM Lake & Land Management Corp

P.O. Box 132

Caledonia MI 49316-

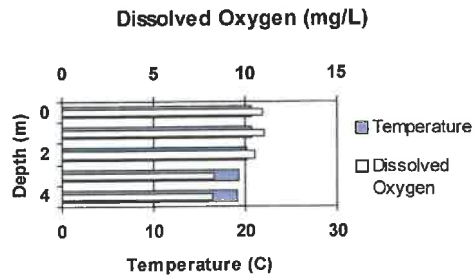
Phone: (616) 891-1294

LAKE CHECK Water Quality Monitoring Report

Customer	Waterbody	Sample Information
Thornapple River Cascade	Thornapple River Cascade	Date: 9/15/2022
		Site: #1

On-Site Results

Depth (m)	Temperature (degrees C)	Dissolved Oxygen	
		mg/L	%
0	20.6	10.9	115
1	20.6	11.0	116
2	20.1	10.5	107
3	19.3	8.3	86
4	19.1	8.2	84



Secchi Disk Depth	0.8 meters
Thermocline Depth	meters

Analytical Results

Parameter	Result	Units	Interpretation
Fecal Bacteria (E. coli)		CFU/100 mL	N/A
Conductivity	522	uS/cm	Moderate concentration of dissolved salts
Total Dissolved Solids	371	mg/L	
pH	8.6	S.U.	Water is slightly alkaline
Alkalinity	232	mg CaCO ₃ /L	Water is very hard
Total Phosphorus	42	ug/L	Phosphorus enriched
Nitrates	970	ug/L	Moderately nitrogen enriched
Chlorophyll	N/A		

Trophic State Evaluation

	TSI	Trophic Status
Based on Secchi Disk Depth	64	hypereutrophic
Based on Total Phosphorus	54	moderately eutrophic
Based on Chlorophyll	N/A	

Conclusions

- Conditions are good for fish growth.
- Minimum dissolved oxygen is adequate for good fish production.
- pH is within acceptable limits.
- Sample is somewhat phosphorus enriched. Create natural buffer between lawn & lakeshore.
- Sample is nitrogen enriched. Consider nutrient abatement measures.
- REPEAT LakeCheck NEXT YEAR!

-
- WARNING. condition requires immediate attention.
 - CAUTION. condition requires further evaluation.
 - OK. condition within acceptable limits.
 - NEUTRAL. condition neither good nor bad.

Notes

Report describes conditions at the time the sample was collected.

Approved by

Jaimee Desjardins

Date 10/31/2022

Mrs. Jaimee Desjardins, Technical Services Manager

FROM YOUR



DEALER



PLM Lake & Land Management Corp

P.O. Box 132

Caledonia MI 49316-

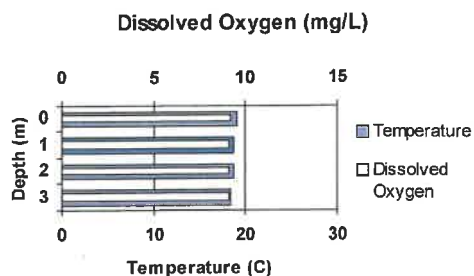
Phone: (616) 891-1294

LAKE CHECK Water Quality Monitoring Report

Customer	Waterbody	Sample Information
Thornapple River Cascade	Thornapple River Cascade	Date: 9/15/2022
		Site: #2

On-Site Results

Depth (m)	Temperature (degrees C)	Dissolved Oxygen	
		mg/L	%
0	19.0	9.2	100
1	18.8	9.1	98
2	18.7	9.1	98
3	18.4	9.1	97



Secchi Disk Depth	1.3 meters
Thermocline Depth	meters

Analytical Results

Parameter	Result	Units	Interpretation
Fecal Bacteria (E. coli)		CFU/100 mL	N/A
Conductivity	515	uS/cm	Moderate concentration of dissolved salts
Total Dissolved Solids	377	mg/L	
pH	8.5	S.U.	Water is slightly alkaline
Alkalinity	236	mg CaCO ₃ /L	Water is very hard
Total Phosphorus	24	ug/L	Moderately phosphorus enriched
Nitrates	1180	ug/L	Moderately nitrogen enriched
Chlorophyll	N/A		

Trophic State Evaluation

	TSI	Trophic Status
Based on Secchi Disk Depth	57	eutrophic
Based on Total Phosphorus	46	mesotrophic
Based on Chlorophyll	N/A	

Conclusions

- Conditions are good for fish growth.
- Minimum dissolved oxygen is adequate for good fish production.
- pH is within acceptable limits.
- Sample is somewhat phosphorus enriched. Create natural buffer between lawn & lakeshore.
- Sample is nitrogen enriched. Consider nutrient abatement measures.
- REPEAT LakeCheck NEXT YEAR!

-
- WARNING. condition requires immediate attention.
 - CAUTION. condition requires further evaluation.
 - OK. condition within acceptable limits.
 - NEUTRAL. condition neither good nor bad.

Notes

Report describes conditions at the time the sample was collected.

Approved by

Jaimee Desjardins

Date 10/31/2022

Mrs. Jaimee Desjardins, Technical Services Manager

FROM YOUR



DEALER



PLM Lake & Land Management Corp

P.O. Box 132

Caledonia MI 49316-

Phone: (616) 891-1294



Bacteria Sampling Report

Waterbody:
Thornapple River Cascade

Thornapple River Cascade

Date Sampled:
7/12/2022

Location	E. coli	Total Coliforms	Interpretation
#1	4.0		● Water meets bacteriological standards for safe swimming.
#2	8.0		● Water meets bacteriological standards for safe swimming.
#3	<4.0		● Water meets bacteriological standards for safe swimming.

Bacterial counts are expressed as the number of Colony Forming Units per 100 milliliters (CFU/100mL).

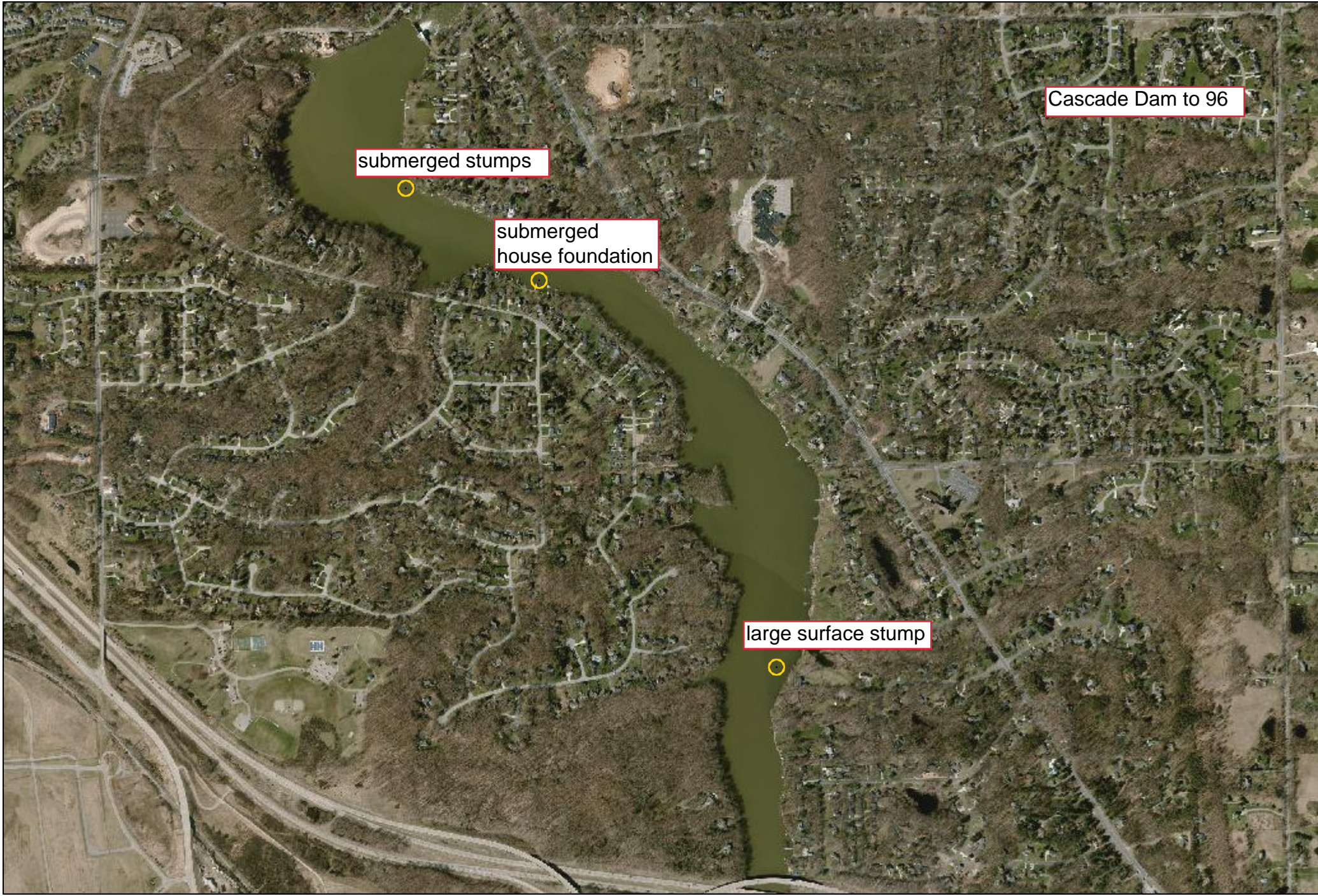
For full body contact recreation (including swimming) counts of E. coli should not exceed 130 (CFU/100mL) as a monthly geometric mean of at least five samples per the State of Michigan standard, or single samples should not exceed 298 (CFU/100mL) [235 CFU/100mL in a designated bathing beach area] per Federal (EPA) guidelines.

Current recreational water quality standards do not rely on Total Coliform counts.

Approved by Jaimee Desjardins Date 31-Oct-22
 Mrs. Jaimee Desjardins, Technical Services Manager



PLM Lake & Land Management Corp
 P.O. Box 132
 Caledonia MI 49316-
 Phone: (616) 891-1294

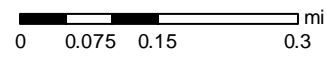


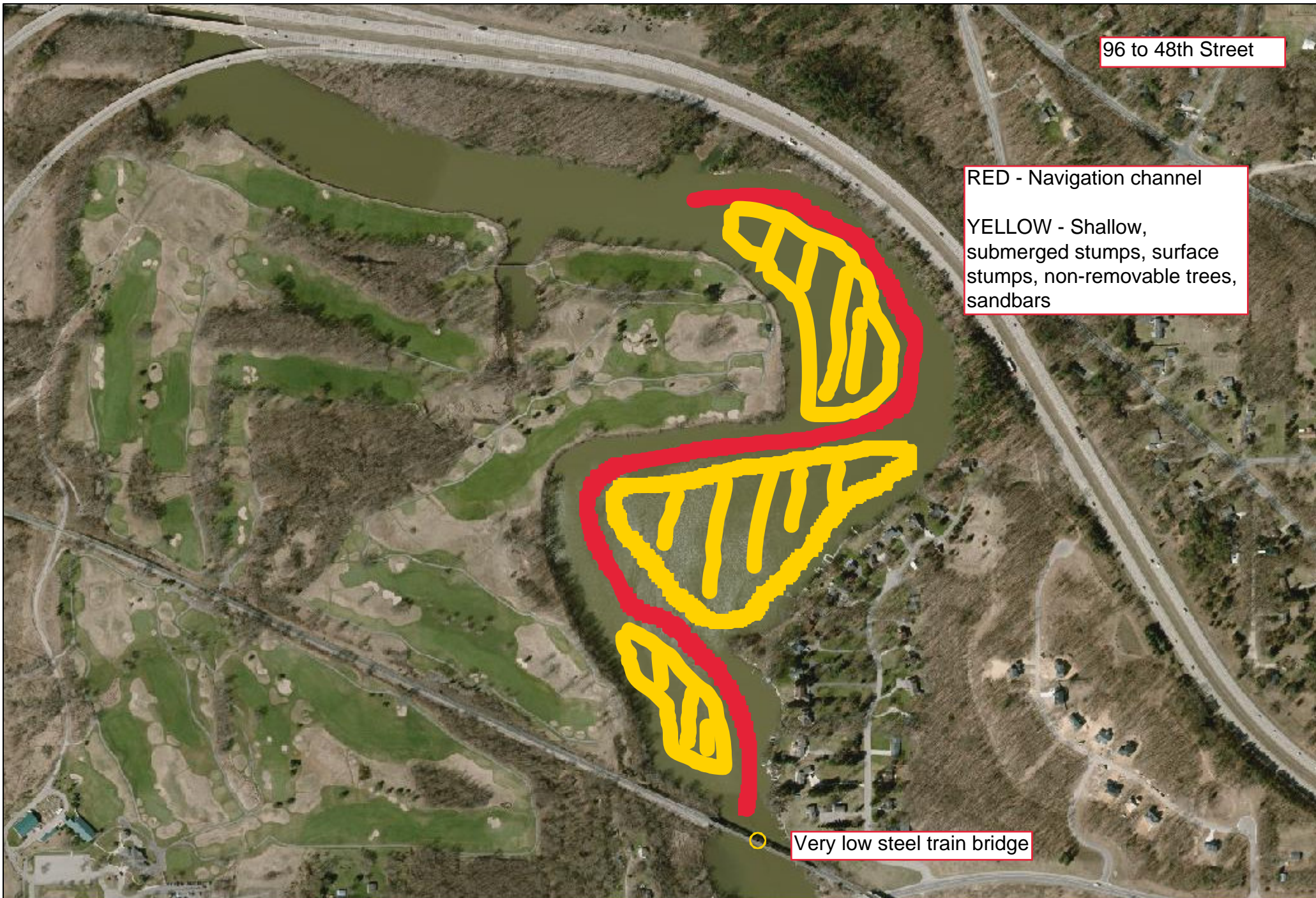
submerged stumps

submerged house foundation

large surface stump

Cascade Dam to 96

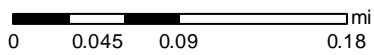


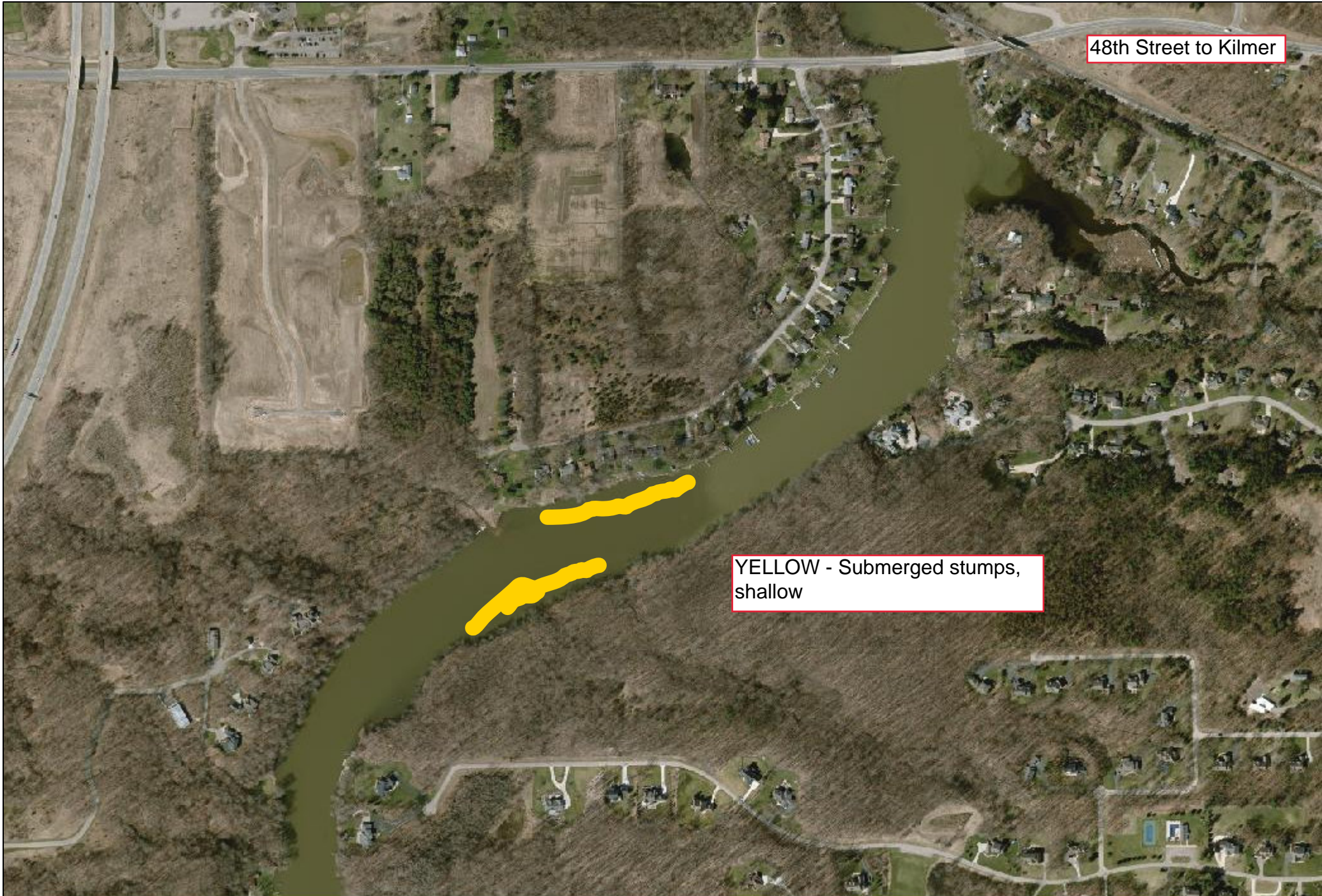


96 to 48th Street

RED - Navigation channel
YELLOW - Shallow, submerged stumps, surface stumps, non-removable trees, sandbars

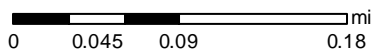
Very low steel train bridge





48th Street to Kilmer

YELLOW - Submerged stumps,
shallow





Kilmer

large submerged rock, end of safe deep water navigation, very shallow and rocky to the south

